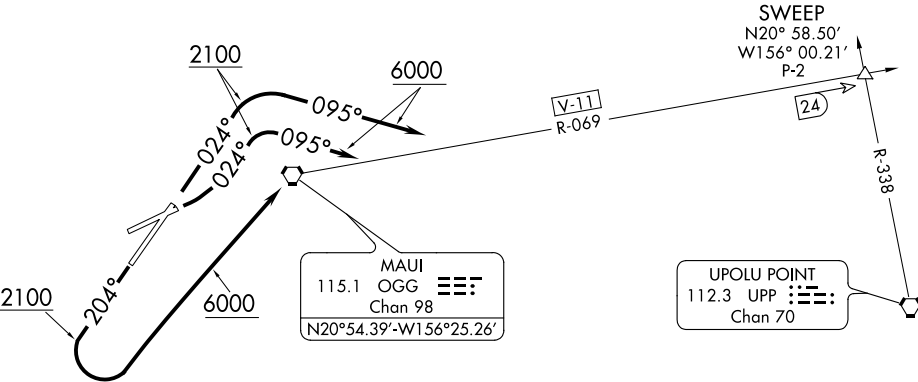


ATIS 128.6  
CLNC DEL  
120.6 290.5  
GND CON  
121.9 279.6  
MAUI TOWER \*  
118.7 (CTAF) 279.6  
MAUI DEP CON  
NORTH 120.2 322.4  
SOUTH 119.5 225.4  
HCF APPROACH  
NORTH 120.2 322.4  
SOUTH 119.5 225.4

TOP ALTITUDE:  
6000



TAKEOFF MINIMUMS

- Rwy 23: NA Obstacle and ATC.
- Rwys 2, 5: Standard with ATC climb of 480' per NM to 2100.
- Rwy 20: Standard with minimum climb of 480' per NM to 2100.

NOTE: Chart not to scale.

▼

DEPARTURE ROUTE DESCRIPTION

TAKEOFF RUNWAY 2: Climb heading 024° to 2100 then climbing right turn to 6000 via heading 095° to intercept OGG VORTAC R-069 (V11) to SWEEP INT/OGG 24 DME.

TAKEOFF RUNWAY 5: Climbing left turn heading 024° to 2100 then right turn to 6000 via heading 095° to intercept OGG VORTAC R-069 (V11) to SWEEP INT/OGG 24 DME.

TAKEOFF RUNWAY 20: Climb heading 204° to 2100 then climbing left turn to 6000 direct OGG VORTAC then via OGG R-069 (V11) to SWEEP INT/OGG 24 DME.