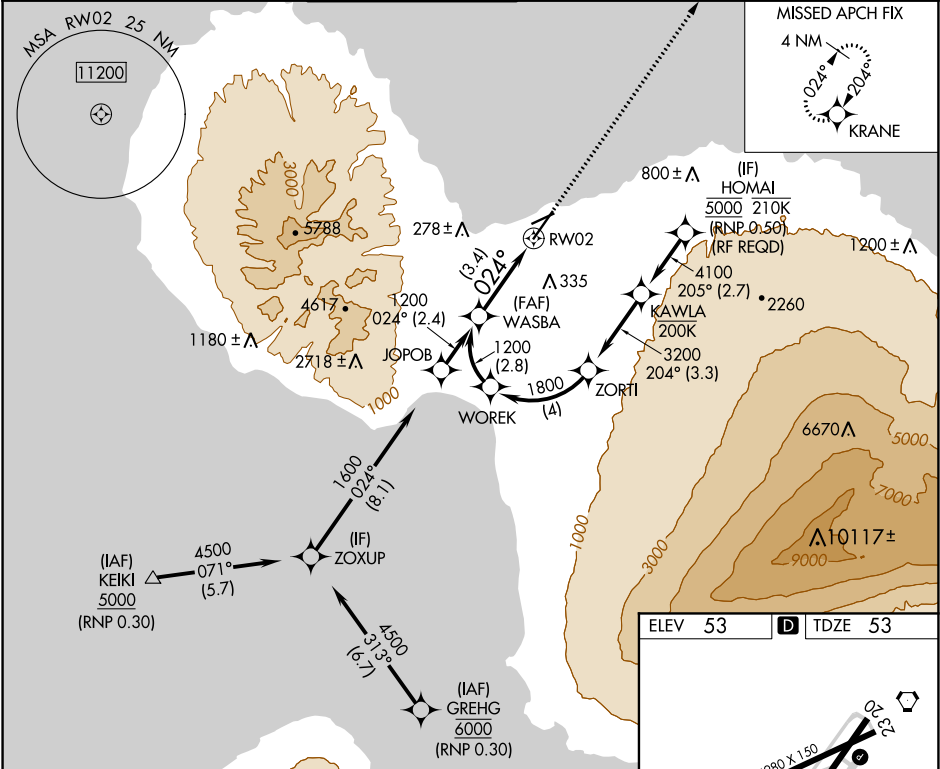




APP CRS	Rwy Idg	6995
024°	TDZE	53
	Apt Elev	53

RNAV (RNP) Z RWY 2  
KAHULUI (OGG)(PHOG)

RNP AR APCH. ▼ For uncompensated Baro-VNAV systems, procedure NA below 14°C or above 54° C. When local altimeter setting not received, procedure NA. For inop ALS, increase RNP 0.30 all Cats visibility to ½ SM.	MALSR AS	MISSED APPROACH: Climb to 3000 direct KRANE and hold.
--	-------------	---

ATIS 128.6	HCF APPROACH 120.2 322.4 (NORTH) 119.5 225.4 (SOUTH)	MAUI TOWER ★ 118.7 (CTAF) 0 279.6	GND CON 121.9 279.6	CLNC DEL 120.6 290.5	UNICOM 122.95
---------------	--	--------------------------------------	------------------------	-------------------------	------------------



WASBA		VGSI and RNAV glidepath not coincident (VGSI Angle 3.00/TCH 77).		3000		KRANE			
1200									
1200				See planview for multiple IF locations.					
GP 3.00° TCH 62		024°		RW02					
		3.4 NM							
CATEGORY		A		B		C		D	
RNP 0.30 DA		349-¾		296 (300-¾)					
AUTHORIZATION REQUIRED									

