

LOC/DME I-OGG	APP CRS	Rwy Idg	6995
<b>110.1</b>	<b>024°</b>	TDZE	<b>54</b>
Chan 38		Apt Elev	<b>54</b>

# ILS or LOC RWY 2

KAHULUI (OGG)(PHOG)

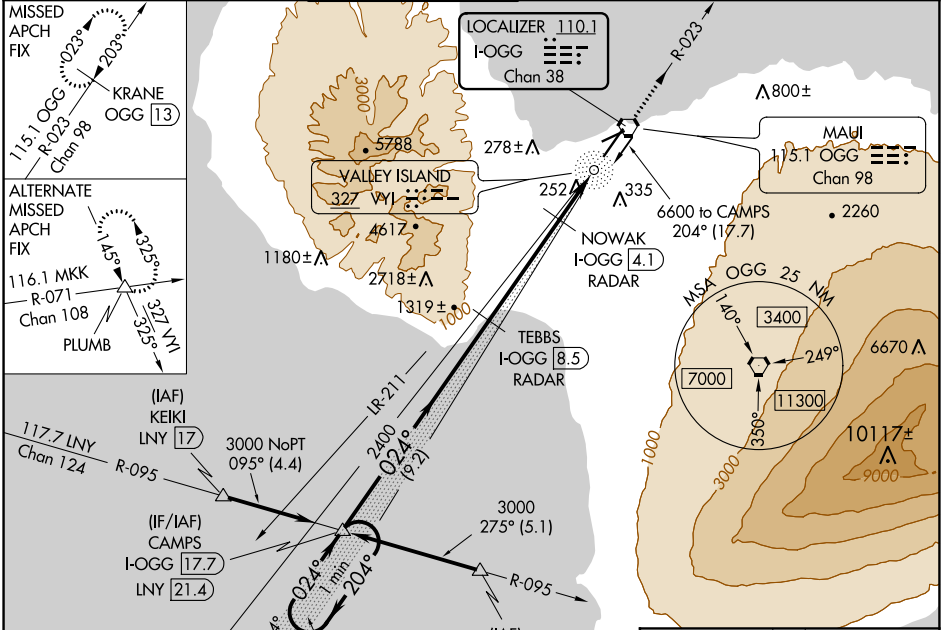
DME required.

For inop ALS, increase ILS Cat E visibility to ¾ SM, and LOC Cats C/D/E visibility to 1 ¾ SM.

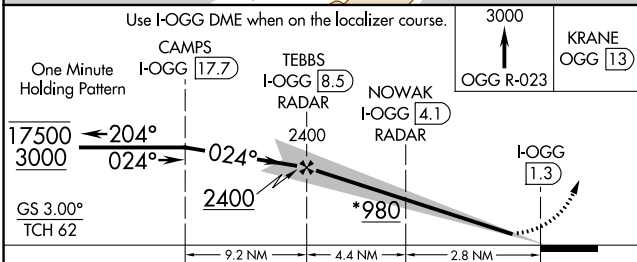
MALSR

MISSED APPROACH: Climb to 3000 on OGG VORTAC R-023 to KRANE/OGG 13 DME and hold.

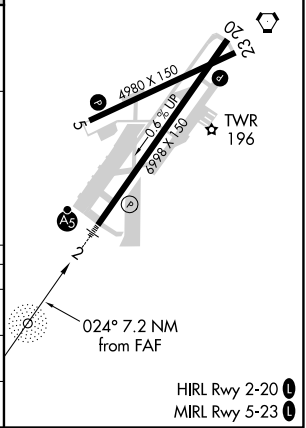
ATIS <b>128.6</b>	HCF APPROACH <b>120.2 322.4 (NORTH)</b> <b>119.5 225.4 (SOUTH)</b>	MAUI TOWER ★ <b>118.7 (CTAF) 0 279.6</b>	GND CON <b>121.9 279.6</b>	CLNC DEL <b>120.6 290.5</b>	UNICOM <b>122.95</b>
----------------------	--	---	-------------------------------	--------------------------------	-------------------------



ELEV 54	TDZE 54
---------	---------



CATEGORY	A	B	C	D	E
S-ILS 2	254-1/2 200 (200-1/2)				
S-LOC 2	520-1/2	466 (500-1/2)	520-1	466 (500-1)	
CIRCLING	520-1 466 (500-1)	620-1 566 (600-1)	780-2 726 (800-2)	1180-3 1180 (1200-3)	1720-3 1666 (1700-3)



PAC, 05 NOV 2020 to 31 DEC 2020

PAC, 05 NOV 2020 to 31 DEC 2020