

VORTAC MKK 116.1 Chan 108	APP CRS 066°	Rwy Idg TDZE Apt Elev N/A N/A 454
---	------------------------	---

VOR or TACAN-A
MOLOKAI (MKK) (PHMK)

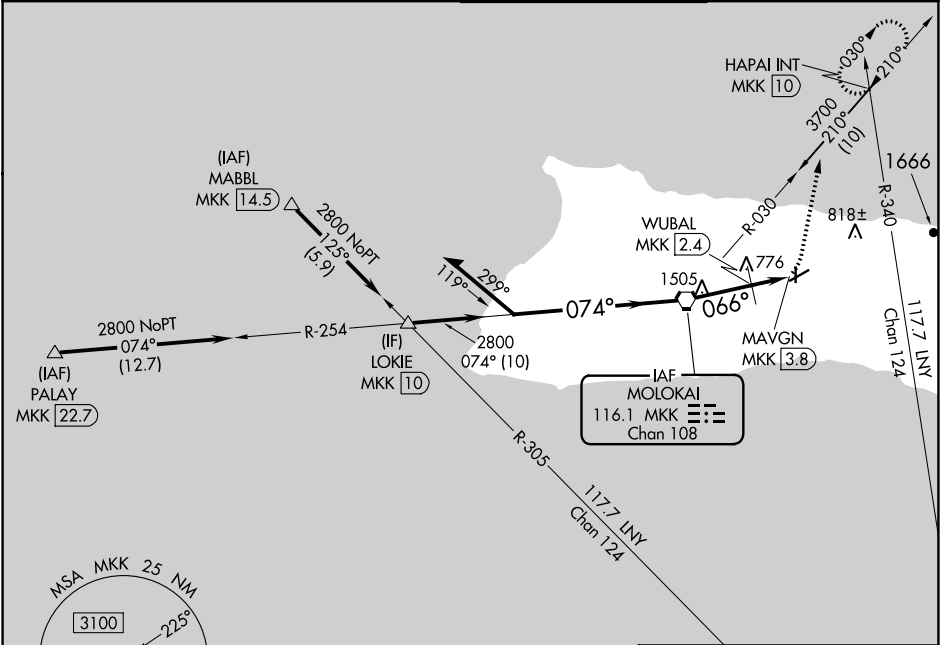
⚠

⚠

Circling Rwy 17, 23 NA at night.

MISSED APPROACH: Climbing left turn to 4000 on heading 360° and on MKK VORTAC R-030 to HAPAI INT/MKK 10 DME and hold, continue climb-in-hold to 4000.

ATIS 128.2	HCF CENTER 124.1 317.5	MOLOKAI TOWER★ 125.7 (CTAF) 0 306.2	GND CON 121.9
----------------------	----------------------------------	---	-------------------------



ELEV 454 **D**

CATEGORY	A	B	C	D
C CIRCLING	1940-1¼ 1486 (1500-1¼)	1940-1½ 1486 (1500-1½)	1940-3 1486 (1500-3)	1486 (1500-3)
WUBAL FIX MINIMUMS (DME REQUIRED)				
C CIRCLING	1400-1¼ 946 (1000-1¼)	1680-3 1226 (1300-3)	1940-3 1486 (1500-3)	

REIL Rwy 5 **0**

MIRL Rlys 5-23 and 17-35 **0**

FAF to MAP 3.8 NM

Knots	60	90	120	150	180
Min:Sec	3:48	2:32	1:54	1:31	1:16