

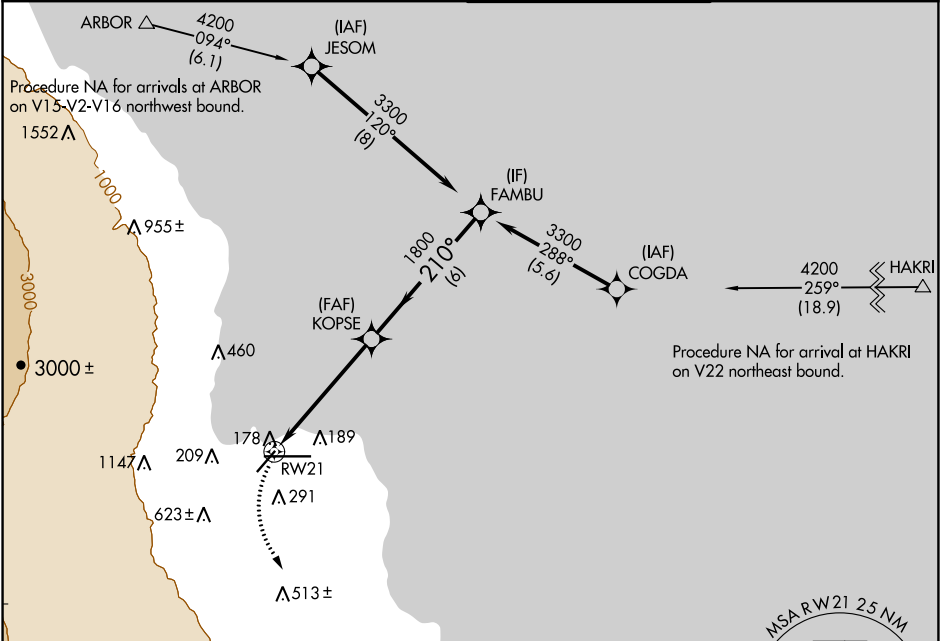
APP CRS	Rwy Idg	5510
210°	TDZE	31
	Apt Elev	38

RNAV (GPS) RWY 21

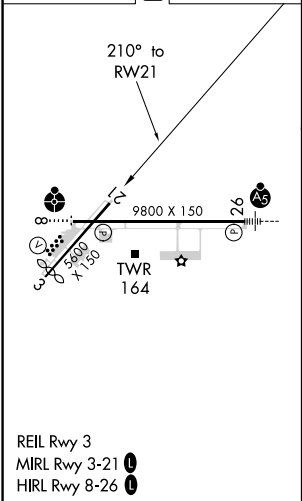
HILO INTL (ITO) (PHTO)

<p>NA</p> <p>Circling NA south of Rwy 8-26. DME/DME RNP-0.3 NA. Helicopter visibility reduction below 1 SM NA. Night landing: Rwy 21 NA.</p>	<p>MISSED APPROACH: Climbing left turn to 5000 direct POA NDB and hold.</p>
---	---

ATIS 126.4	HILO APP CON* 119.7 269.2	HILO TOWER* 118.1(CTAF) 0 263.1	GND CON 121.9
---------------	------------------------------	------------------------------------	------------------



ELEV 38	D	TDZE 31
---------	---	---------



PAHOA POA

5 NM

140°

320°

290°

Visual Segment - Obstacles.

FAMB

5000	POA	Visual Segment - Obstacles.			
CATEGORY	A	B	C	D	
LNAV MDA	440-1	409 (500-1)	440-1½	409 (500-1½)	
CIRCLING	500-1	462 (500-1)	500-1½	700-2	
			462 (500-1½)	662 (700-2)	

PAC, 05 NOV 2020 to 31 DEC 2020

PAC, 05 NOV 2020 to 31 DEC 2020