

APP CRS
079°

Rwy Idg **12300**
TDZE **13**
Apt Elev **13**

RNAV (RNP) Z RWY 8L
DANIEL K INOUYE INTL (HNL) (PHNL)

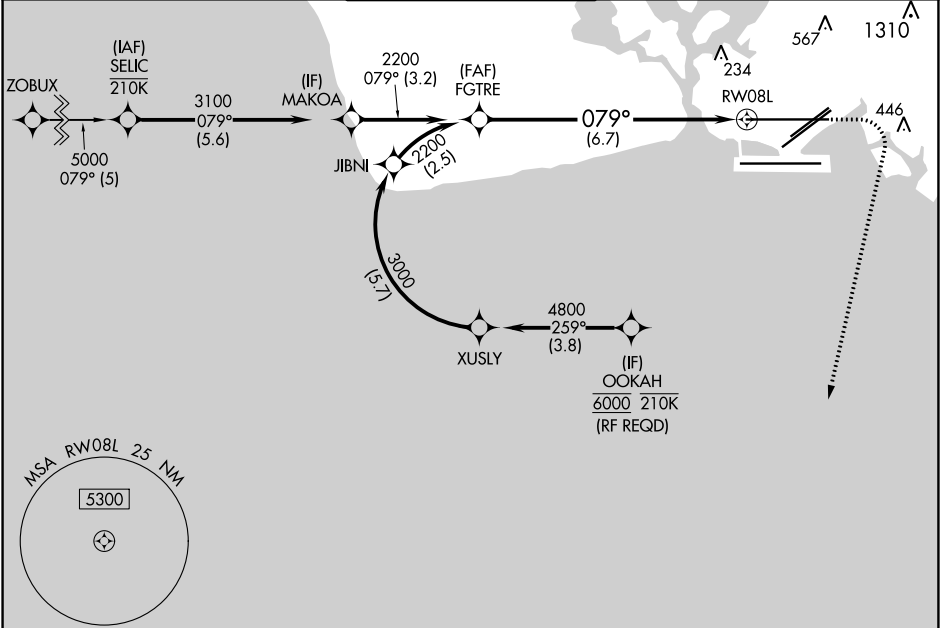
RNP AR APCH.

For uncompensated Baro-VNAV systems, procedure NA below 17°C or above 54°C.

MALSR

MISSED APPROACH: Climb to 420 then climbing right turn to 3000 direct ALANA and hold.

D-ATIS 127.9 251.15	HCF APPROACH 118.3 269.0	HONOLULU TOWER 118.1 257.8 123.9 273.575 (Rwy 8R/26L)	GND CON 121.9 348.6	CLNC DEL 121.4 281.4
-------------------------------	------------------------------------	---	-------------------------------	--------------------------------



ELEV 13

D

TDZE 13

079° to RW08L

163 170 22R 22L 12312 X 150 4955 X 150 5002 X 150 26R 26L 190 150 12000 X 200 8R 20L

WATER RWYS:
8W-26W 5090 X 300
4W-22W 3000 X 150

REIL Rwy 4L, 8R, 22L, 22R and 26R
HIRL Rwy 4L-22R, 4R-22L, 8L-26R and 8R-26L

ALANA

420 3000

3.51° 171° 4 NM

MAKOA

3100

079°

2200

GP 3.00° TCH 56

3.2 NM

6.7 NM

FGTR

2200

RW08L

VGSI and RNAV glidepath not coincident (VGSI Angle 3.00/TCH 71).

See planview for multiple IF locations.

CATEGORY	A	B	C	D
RNP 0.30 DA	343-½ 330 (400-½)			

AUTHORIZATION REQUIRED

PAC: 05 NOV 2020 to 31 DEC 2020

PAC: 05 NOV 2020 to 31 DEC 2020