

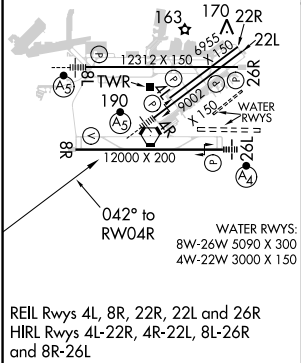
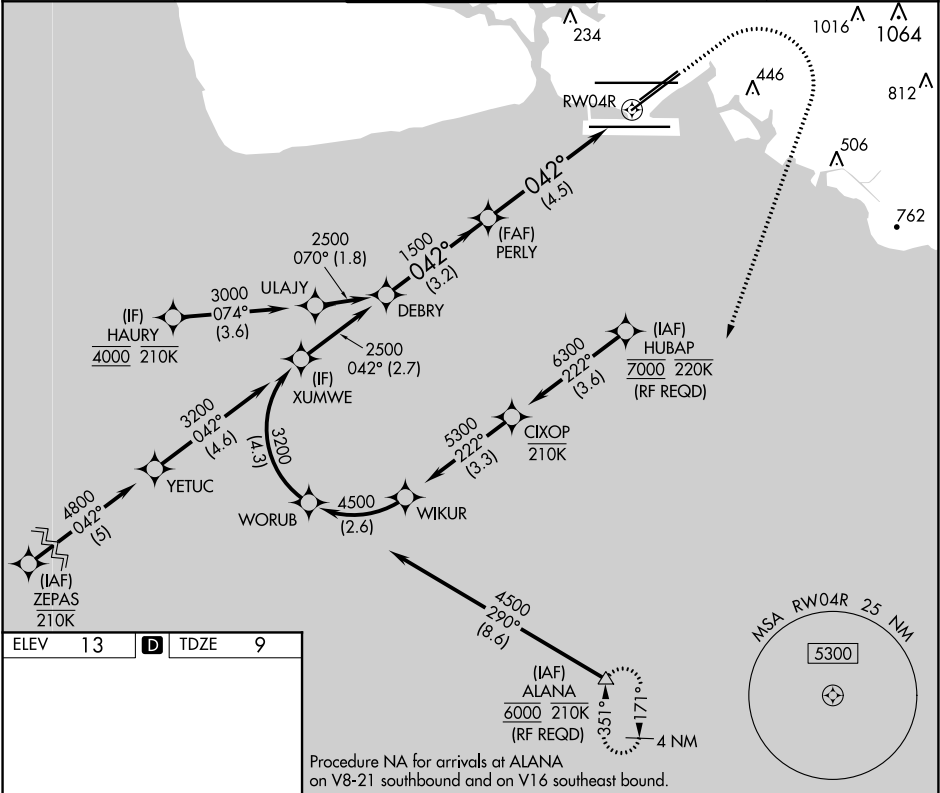
APP CRS	Rwy Idg	8950
042°	TDZE	9
	Apt Elev	13

RNAV (RNP) Z RWY 4R

DANIEL K INOUEY INTL (HNL) (PHNL)

RNP AR APCH.	MALSR	MISSED APPROACH: Climb to 580 then climbing right turn to 3000 direct ALANA and hold.
▼ For uncompensated Baro-VNAV systems, procedure NA below 17°C or above 54°C. For inop ALS, increase RNP 0.30 Cat A visibility to ¾ SM and Cat B to ½ SM.		

D-ATIS	HCF APPROACH	HONOLULU TOWER	GND CON	CLNC DEL
127.9 251.15	118.3 269.0	118.1 257.8 123.9 273.575 (Rwy 8R/26L)	121.9 348.6	121.4 281.4



DEBRY		VGSI and RNAV glidepath not coincident (VGSI Angle 3.00/TCH 71).		580	3000	ALANA
2500		PERLY		↑	↗	△
GP 3.00° TCH 55		042°		See planview for multiple IF locations.		
1500		1500		RWY 04R		
3.2 NM		4.5 NM				
CATEGORY	A	B	C	D		
RNP 0.30 DA	259-½ 250 (300-½)	277-½ 268 (300-½)	432-¾	423 (500-¾)		
AUTHORIZATION REQUIRED						

PAC, 05 NOV 2020 to 31 DEC 2020

PAC, 05 NOV 2020 to 31 DEC 2020