

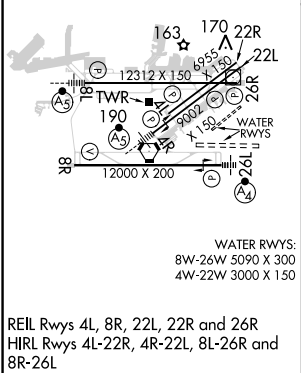
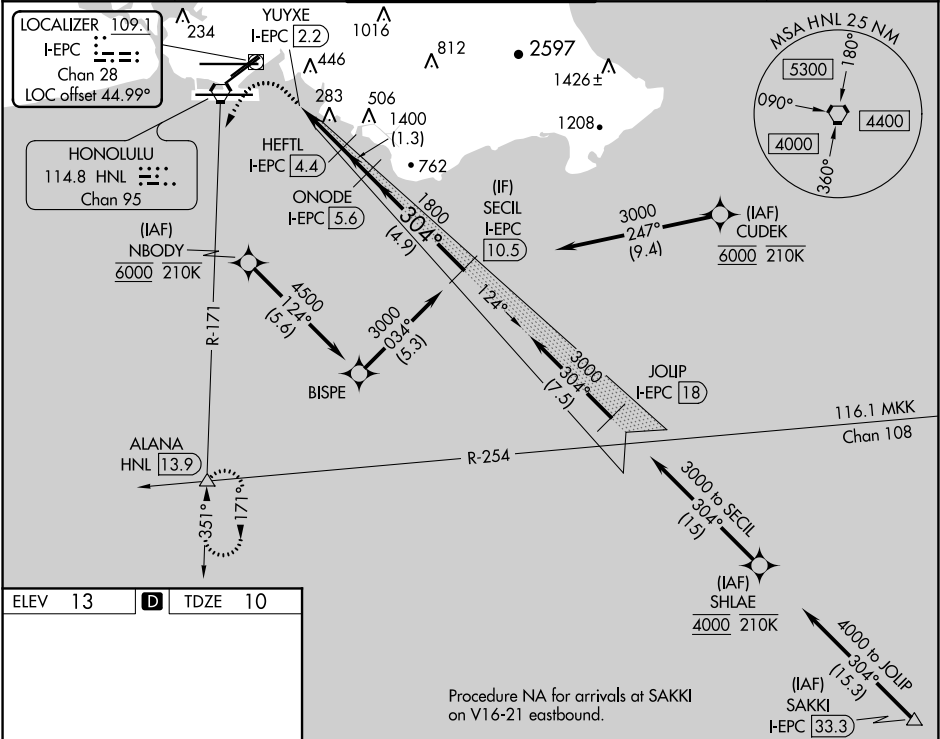
LOC/DME I-EPC	APP CRS	Rwy Idg	12000
109.1	304°	TDZE	10
Chan 28		Apt Elev	13

LDA RWY 26L

DANIEL K INOUEY INTL (HNL) (PHNL)

DME required. From CUDEK, NBODY, SHLAE: RNAV 1-GPS required.	MALSF	MISSED APPROACH: Climb to 600 then climbing left turn to 3000 on HNL VORTAC R-171 to ALANA INT/ HNL 13.9 DME and hold.
NA Circling Rwy 22R NA at night. Circling NA to sea lanes 4W, 8W, 22W and 26W. NBODY transition, CUDEK transition, SHLAE transition NA for Cat E aircraft. Follow flasher lights to Rwy 26L. Procedure NA when ALS or SFL inop. Circling Cat E NA. Circling NA for Cats A and B northwest of Rwy 8L-22R. Circling NA for Cats C and D north of Rwy 8L-26R.		

D-ATIS	HCF APPROACH	HONOLULU TOWER	GND CON	CLNC DEL
127.9 251.15	118.3 269.0	118.1 257.8 123.9 273.575 (Rwy 8R/26L)	121.9 348.6	121.4 281.4



ELEV 13	D	TDZE 10
Procedure NA for arrivals at SAKKI on V16-21 eastbound.	Procedure NA for arrivals at SAKKI on V16-21 eastbound.	Procedure NA for arrivals at SAKKI on V16-21 eastbound.
600	3000	ALANA
HNL R-171		
Use I-EPC DME when on the localizer course.		
YUYXE I-EPC 2.2	HEFTL I-EPC 4.4	ONODE I-EPC 5.6
1400	1800	3000
2.2 NM	1.3 NM	4.9 NM
CATEGORY	A	B
S-26L	600-2	590 (600-2)
CIRCLING	600-2½ 587 (600-2½)	640-2½ 627 (700-2½)
	760-2½ 747 (800-2½)	1260-3 1247 (1300-3)
		NA