

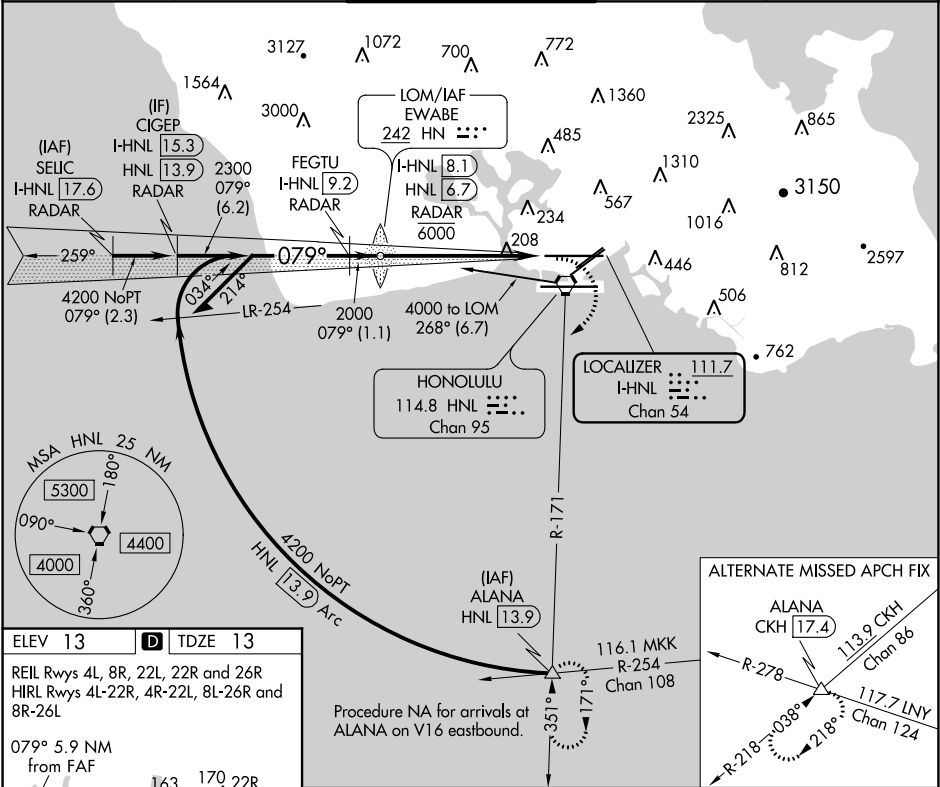
LOC/DME I-HNL	APP CRS	Rwy Idg	12300
111.7	079°	TDZE	13
Chan 54		Apt Elev	13

LOC RWY 8L

DANIEL K INOUE INTL (HNL) (PHNL)

DME or RADAR required.	MALSR	MISSED APPROACH: Climbing right turn to 5000 on heading 200° and HNL VORTAC R-171 to ALANA INT/HNL 13.9 DME and hold, continue climb-in-hold to 5000.
⚠ Circling Rwy 22R NA at night. Circling NA for Cats A and B northwest of Rwys 8L and 22R. Circling NA for Cats C and D north of Rwy 8L-26R. Circling NA to Sea Lanes 4W, 8W, 22W, and 26W.	AS	

D-ATIS	HCF APPROACH	HONOLULU TOWER	GND CON	CLNC DEL
127.9 251.15	118.3 269.0	118.1 257.8 123.9 273.575 (Rwy 8R/26L)	121.9 348.6	121.4 281.4



ELEV 13 D TDZE 13

REIL Rwys 4L, 8R, 22L, 22R and 26R
HIRL Rwys 4L-22R, 4R-22L, 8L-26R and 8R-26L

079° 5.9 NM from FAF

WATER RWYS:
8W-26W 5090 X 300
4W-22W 3000 X 150

FAF to MAP 5.9 NM

Knots	60	90	120	150	180
Min:Sec	5:54	3:56	2:57	2:22	1:58

Remain within 10 NM

3900 259° FEGTU I-HNL 9.2 RADAR

Use I-HNL DME when on the localizer course.

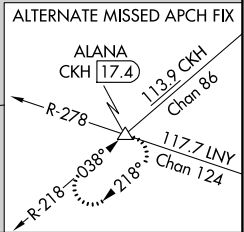
2300 079°

2000

3.08° TCH 55

1.1 NM 5.9 NM

CATEGORY	A	B	C	D
S-8L	460-1/2	447 (500-1/2)	460-7/8	447 (500-7/8)
CIRCLING	640-1 627 (700-1)	760-1 747 (800-1)	760-2 1/4 747 (800-2 1/4)	1400-3 1387 (1400-3)



PAC: 05 NOV 2020 to 31 DEC 2020

PAC: 05 NOV 2020 to 31 DEC 2020