



LOC/DME I-HUM <b>110.5</b> Chan <b>42</b>	APP CRS <b>042°</b>	Rwy Idg <b>8950</b> TDZE <b>9</b> Apt Elev <b>13</b>	LOC RWY 4R DANIEL K INOUE INTL (HNL) (PHNL)
---	------------------------	--	--



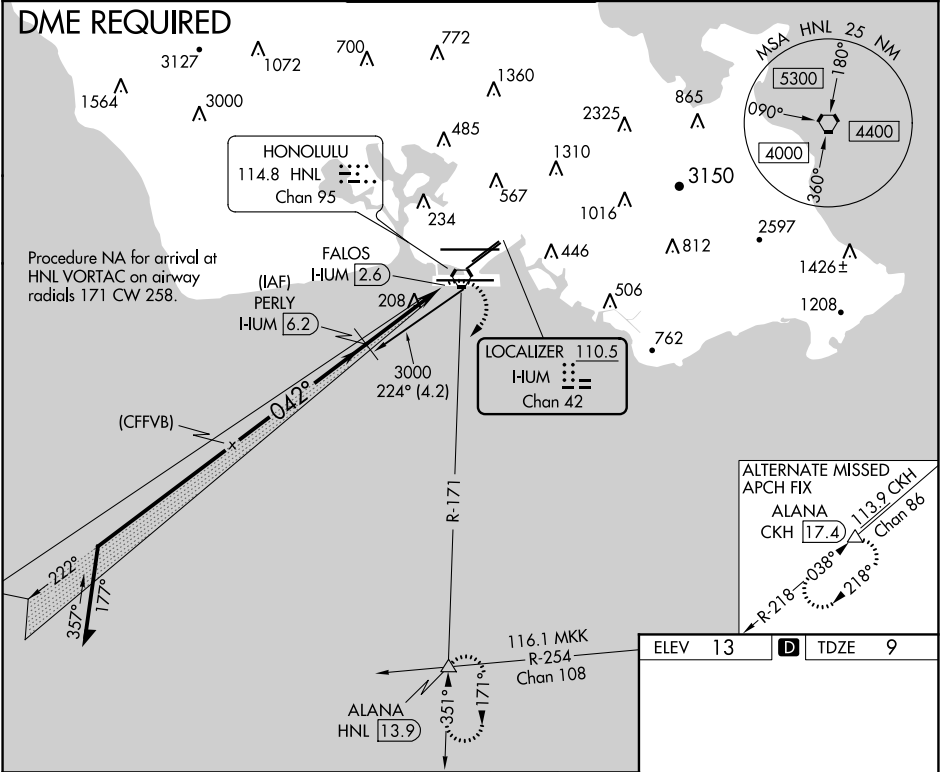
Circling Rwy 22R NA at night. DME required. For inop ALS, increase Cat E visibility to 1 3/8 SM. Circling NA for Cats A and B northwest of Rwys 8L and 22R. Circling NA for Cats C and D north of Rwy 8L-26R. Circling NA to Sea Lanes 4W, 8W, 22W, and 26W.

MALSR

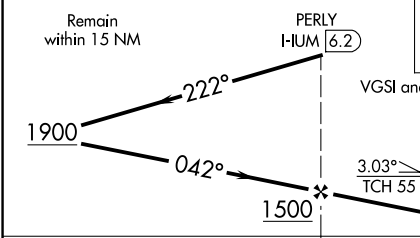


MISSED APPROACH: Climbing right turn to 3000 heading 220° and HNL VORTAC R-171 to ALANA INT/HNL 13.9 DME and hold.

D-ATIS <b>127.9 251.15</b>	HCF APPROACH <b>118.3 269.0</b>	HONOLULU TOWER <b>118.1 257.8</b> <b>123.9 273.575</b> (Rwy 8R/26L)	GND CON <b>121.9 348.6</b>	CLNC DEL <b>121.4 281.4</b>
-------------------------------	------------------------------------	---	-------------------------------	--------------------------------



Remain within 15 NM



PERLY I-HUM 6.2

3000 hdg 220°

HNL R-171

ALANA

VGSI and descent angles not coincident (VGSI Angle 3.00/TCH 71).

FALOS I-HUM 2.6

042° 4.5 NM from FAF

WATER RWYS: 8W-26W 5090 X 300, 4W-22W 3000 X 150

CATEGORY	A	B	C	D	E
S-4R	460-3/4	451 (500-3/4)	460-7/8	451 (500-7/8)	
CIRCLING	640-1 1/4 627 (700-1 1/4)	760-1 1/4 747 (800-1 1/4)	760-2 1/4 747 (800-2 1/4)	1400-3 1387 (1400-3)	NA

REIL Rwys 4L, 8R, 22L, 22R and 26R

HIRL Rwys 4L-22R, 4R-22L, 8L-26R and 8R-26L