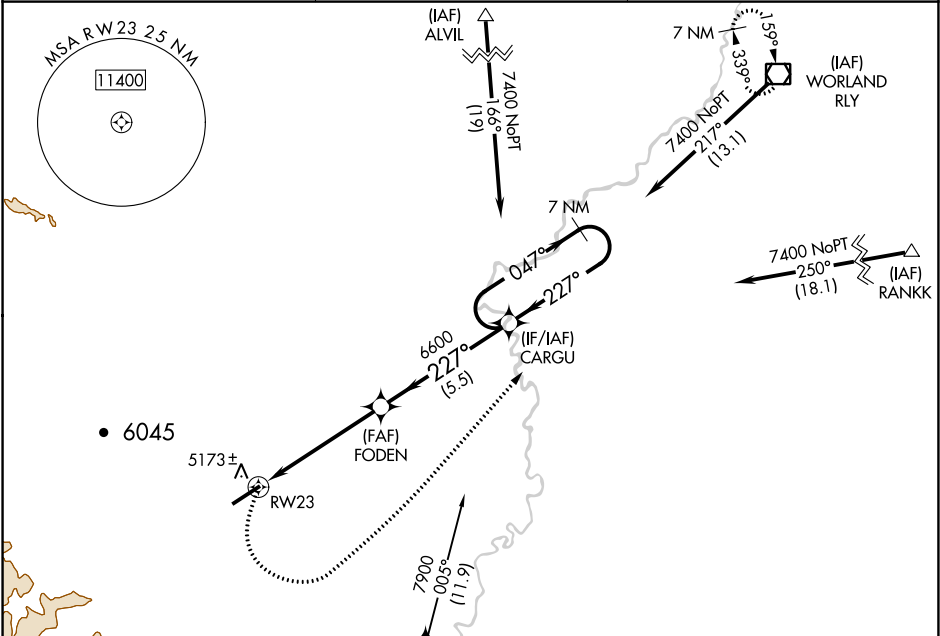


WAAS CH 53340 W23A	APP CRS 227°	Rwy Idg TDZE 4892 Apt Elev 4892	6370
--	------------------------	---	-------------

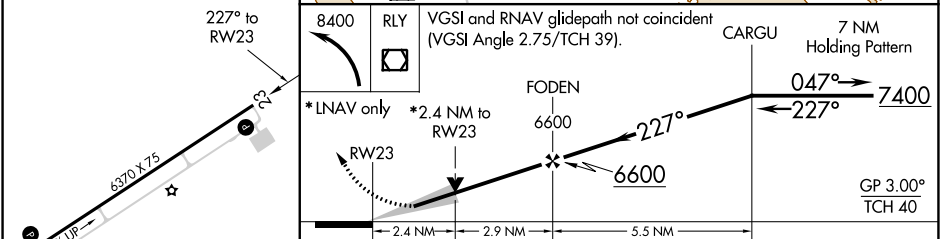
RNAV (GPS) RWY 23
HOT SPRINGS COUNTY (HSG)

-36°C	For uncompensated Baro-VNAV systems, LNAV/VNAV NA below -24°C (-11°F) or above 54°C (130°F). Circling NA northwest of Rwy 5-23. DME/DME RNP-0.3 NA.	MISSED APPROACH: Climbing left turn to 8400 direct RLY VOR/DME and hold.
-------	---	---

AWOS-3PT 121.125	SALT LAKE CENTER 133.25 285.6	UNICOM 122.8 (CTAF) 1
----------------------------	---	---------------------------------



ELEV 4892	TDZE 4892	Procedure NA for arrival on BOY VOR/DME airway radials 322 CW 087.
-----------	-----------	---



REIL Rwy 5 and 23 MIRL Rwy 5-23	CATEGORY	A	B	C	D
	LPV DA	5382-1¾ 490 (500-1¾)			
	LNAV/VNAV DA	5577-2½ 685 (700-2½)			
	LNAV MDA	5620-1 728 (800-1)		5620-2 728 (800-2)	
	CIRCLING	5620-1 728 (800-1)		5620-2 728 (800-2)	5880-3 988 (1000-3)