

WAAS CH 45539 W34A	APP CRS 345°	Rwy Idg 6601 TDZE 5369 Apt Elev 5423
--	------------------------	---

RNAV (GPS) RWY 34
ENNIS-BIG SKY (EKS)

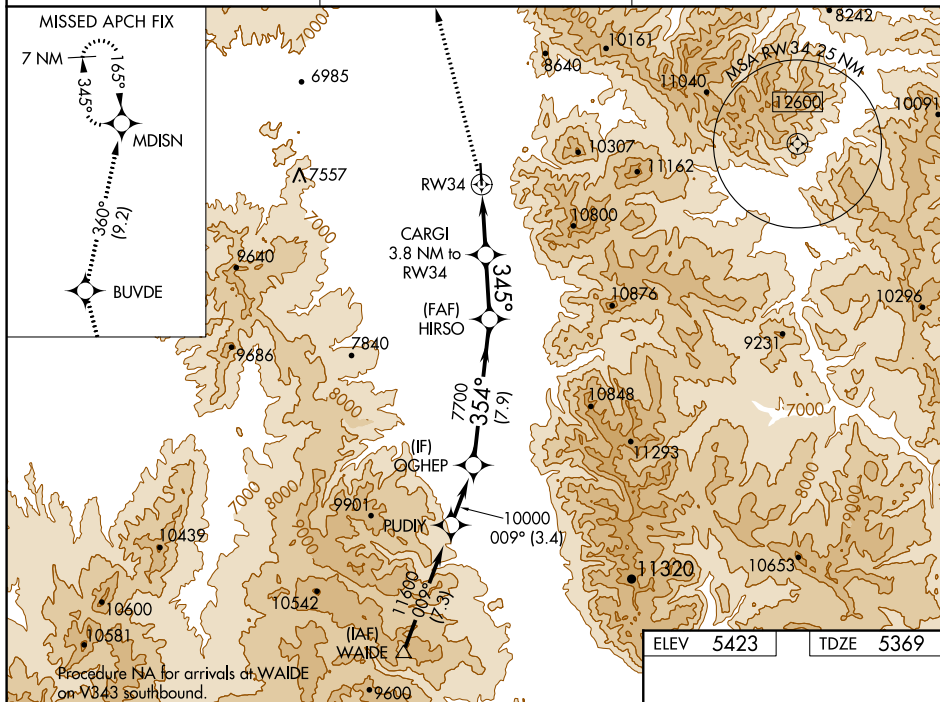
<div style="display: flex; flex-direction: column; align-items: center;"> <div style="background-color: black; color: white; padding: 5px; margin-bottom: 5px;">T</div> <div style="background-color: black; color: white; padding: 5px;">A</div> </div>
--

For uncompensated Baro-VNAV systems, LNAV/VNAV NA below -25°C (-13°F) or above 54°C (130°F). Circling NA east of Rwy 16-34. DME/DME RNP-0.3 NA.

MISSED APPROACH: Climb to 11 900 direct BUVDL and on track 360° to MDISN and hold, continue climb-in-hold 11 900.

AWOS-3P
119.85

BIG SKY APP CON ★
118-975 226-675

UNICOM
122.8 (CTAF) 

ELEV	5423		TDZE	5369
------	------	--	------	------

