

BIG SKY APP CON ★
118.975 226.675

WHITEHALL
HIA

293°
(25)

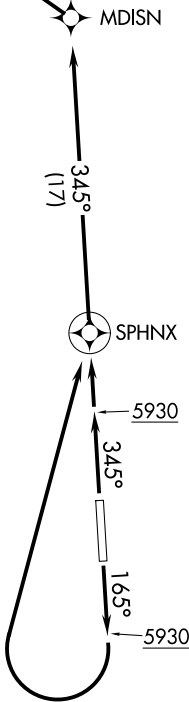
NOTE: GPS required.
NOTE: RNAV 1

TAKEOFF MINIMUMS

- Rwy 16: Standard with a minimum climb of 500' per NM to 5930 then minimum climb of 323' per NM to 8600.
Rwy 34: Standard with a minimum climb of 500' per NM to 5930, then minimum climb of 304' per NM to 8500.

TAKEOFF OBSTACLE NOTES

- Rwy 16: Fence 105' from DER, 291' left of centerline, 5' AGL/5358' MSL. Multiple bushes beginning 113' from DER, 493' left of centerline, up to 8' AGL/5358' MSL. Building 731' from DER, 481' left of centerline, 18' AGL/5378' MSL. Pole 970' from DER, 671' left of centerline, 32' AGL/5395' MSL. Multiple vehicles on road beginning 1246' from DER, left and right of centerline, 18' AGL/5397' MSL.
Rwy 34: Multiple fence poles beginning 137' from DER, 378' right of centerline, up to 5' AGL 5510' MSL. Multiple bushes beginning 175' from DER, 424' right of centerline, up to 8' AGL/5562' MSL. Multiple trees beginning 200' from DER, 1' right of centerline, up to 8' AGL/5634' MSL. Multiple vehicles on road beginning 5709' from DER, left and right of centerline, up to 18' AGL/5597' MSL.



NOTE: Chart not to scale.

DEPARTURE ROUTE DESCRIPTION

TAKEOFF RUNWAY 16: Climb heading 165° to 5930, then climbing right turn direct SPHNX, then on track 345° to MDISN, then on track 293° to HIA VOR/DME. Thence
TAKEOFF RUNWAY 34: Climb heading 345° to 5930 then direct SPHNX, then on track 345° to MDISN, then on track 293° to HIA VOR/DME. Thence
. . . . on assigned route. Expect filed altitude 10 minutes after departure.