

APP CRS	Rwy Idg	4471
083°	TDZE	3669
	Apt Elev	3703

RNAV (GPS) Y RWY 9

GRANT COUNTY RGNL/OGILVIE FIELD (GCD)

▼

When local altimeter setting not received, procedure NA.

▲

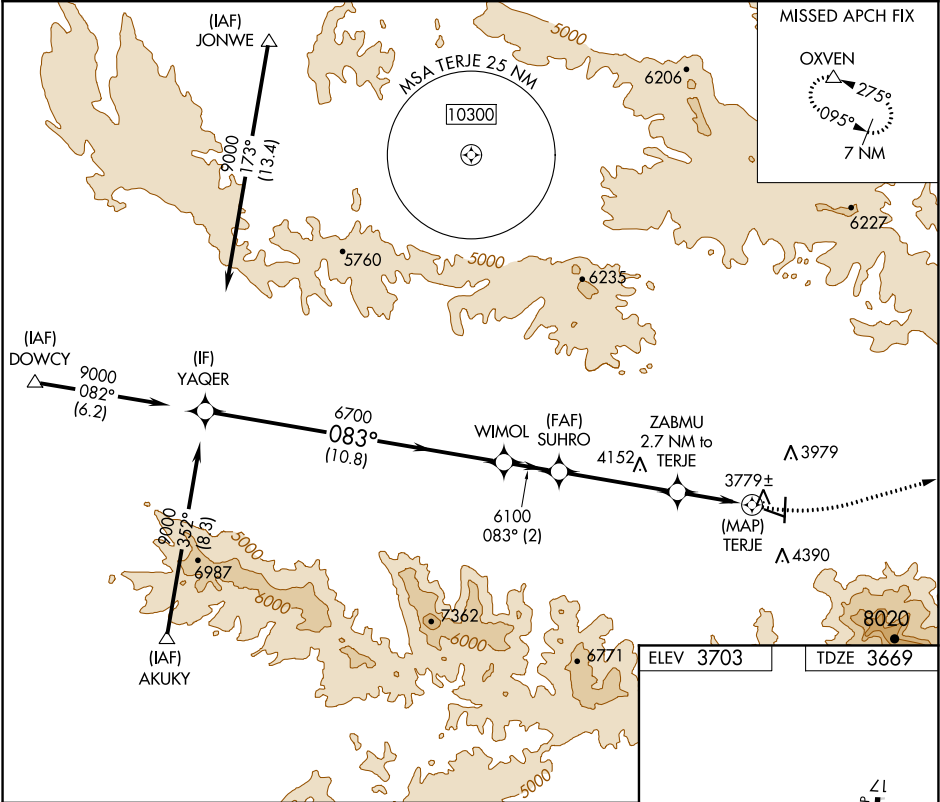
Circling NA south of Rwy 9-27. DME/DME RNP-0.3 NA.

▲

Helicopter visibility reduction below ¾ SM not authorized.

MISSED APPROACH: Climbing left turn to 12000 direct OXVEN and hold, continue climb-in-hold to 12000.

AWOS-3 118.375	SEATTLE CENTER 128.15 257.75	UNICOM 122.8 (CTAF) 0
-------------------	---------------------------------	--------------------------



YAQER		VGSi and descent angles not coincident (VGSi Angle 3.00/TCH 45).		12000	OXVEN
9000		083°		△	
6700		6100		TCH 40	
3.03°		TCH 40		TERJE	
10.8 NM		2 NM		4.3 NM	
2.7 NM		0.5 NM			
CATEGORY	A	B	C	D	
LNAV MDA	4280-1	611 (600-1)	4280-1¾ 611 (600-1¾)	NA	
CIRCLING	4280-1 577 (600-1)	4520-1¼ 817 (900-1¼)	4520-2½ 817 (900-2½)	NA	

ELEV 3703

TDZE 3669

4471 X 60

1.1° UP

5220 X 60

0.5° UP

3707

35

REIL Rwy 17 and 9 0

MIRL Rwy 9-27 and 17-35 0