

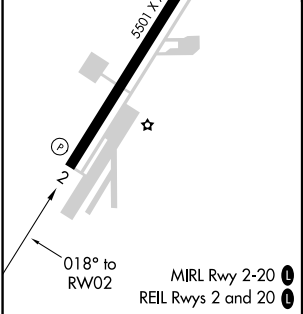
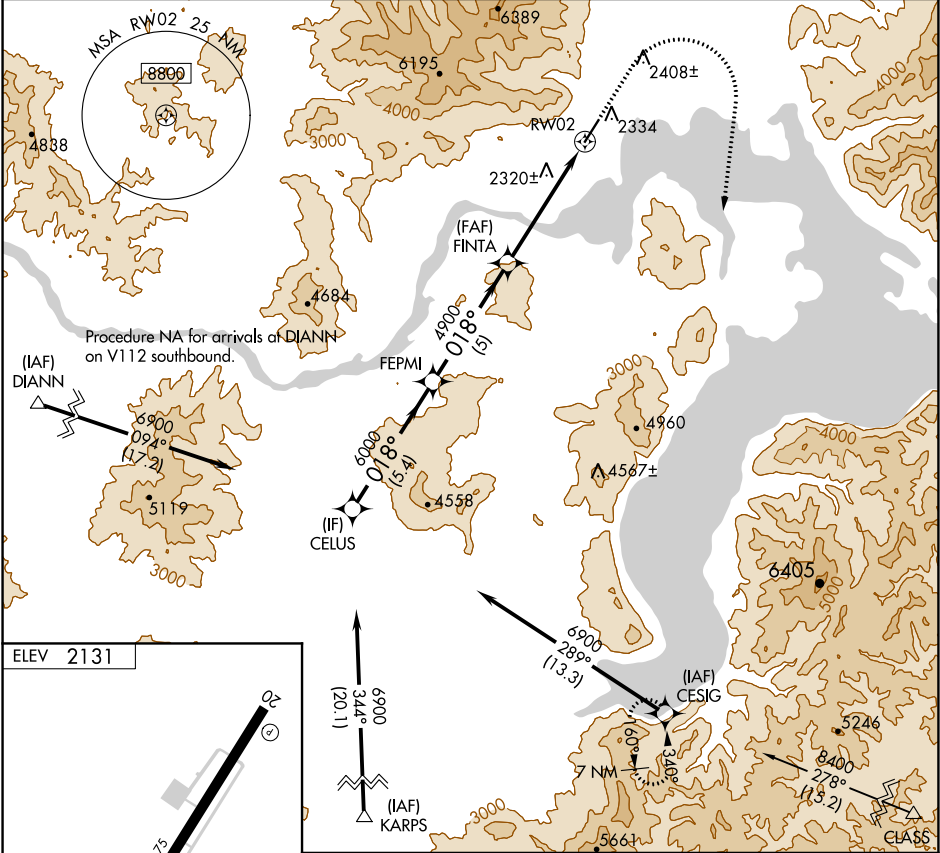
APP CRS	Rwy Idg	N/A
018°	TDZE	N/A
	Apt Elev	2131

RNAV (GPS)-B  
SANDPOINT (SZT')

**⚠** DME/DME RNP-0.3 NA. Circling NA west of Rwy 2-20. When local altimeter setting not received, use Deer Park altimeter setting and increase all MDA 120 feet.

**⚠** MISSED APPROACH: Climb to 5800 then climbing right turn to 7900 direct CESIG and hold.

AWOS-3 135.425	SEATTLE CENTER 123.95 290.55	UNICOM 122.7 (CTAF) <b>0</b>
-------------------	---------------------------------	---------------------------------



CELUS				5800	7900	CESIG
6900				↑	↻	✧
FEPMI						
FINTA						
RW02						
4900						
5.4 NM						
5 NM						
5.2 NM						
CATEGORY	A	B	C	D		
CIRCLING	3600-1¼ 1469 (1500-1¼)	3600-1½ 1469 (1500-1½)	3600-3 1469 (1500-3)	4180-3 2049 (2100-3)		

NW-1, 03 DEC 2020 to 31 DEC 2020

NW-1, 03 DEC 2020 to 31 DEC 2020