

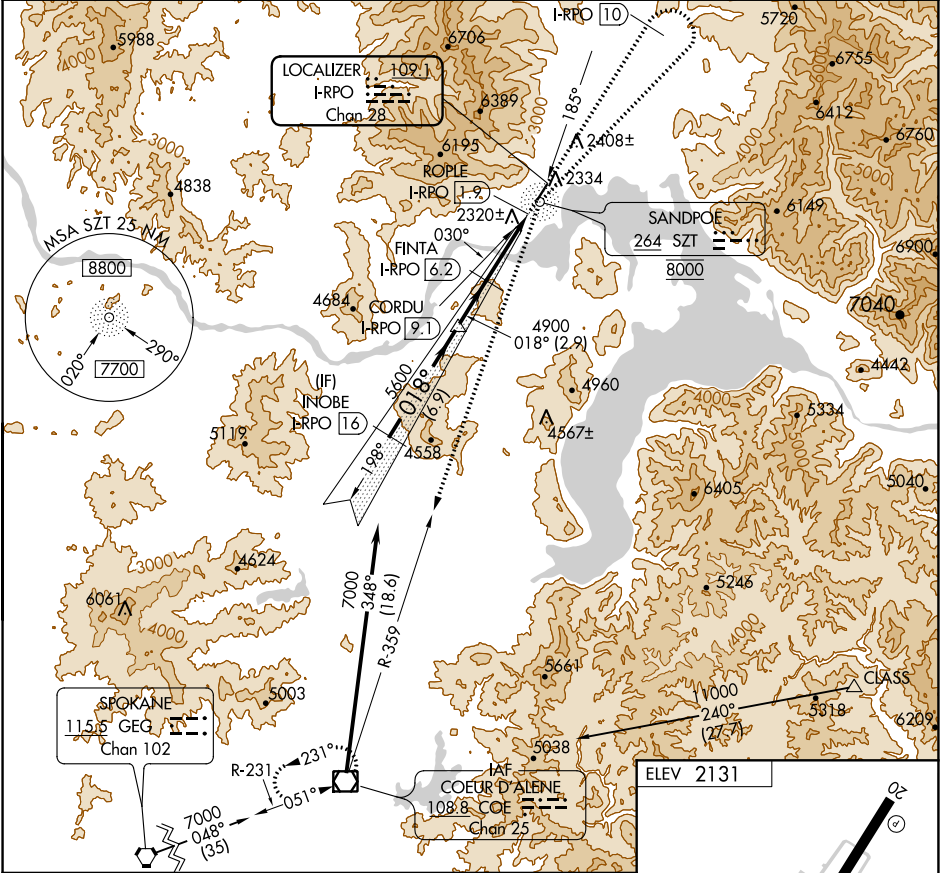
LOC/DME I-RPO	APP CRS	Rwy ldg TDZE	N/A
109.1	018°		N/A
Chan 28		Apt Elev	2131


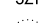
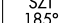


LOC-A
SANDPOINT (SZT')

NA ADF and DME required. Circling NA west of Rwy 2-20. When local altimeter setting not received, use Deer Park altimeter setting and increase all MDA 120 feet.

MISSED APPROACH: Climb to 8000 on heading 018° to I-RPO 10 DME and climbing right turn on SZT NDB bearing 030° to SZT NDB to cross SZT NDB at 8000 then on SZT NDB bearing 185° and COE VOR/DME R-359 to COE VOR/DME and hold.

AWOS-3 135.425	SEATTLE CENTER 123.95 290.55	UNICOM 122.7 (CTAF) 0
--------------------------	--	---------------------------------



<div>INOBE I-RPO 16</div>		<div>8000 ↑ hdg 018°</div>	<div>I-RPO 10</div>	<div> SZT 030°</div>	<div> SZT 8000</div>	<div> SZT 185° & COE R-359</div>	<div> COE</div>
<div><div>7000</div><div>018°</div><div>5600</div><div>4900</div><div>ROPLE I-RPO 1.9</div></div>							
6.9 NM		2.9 NM		4.3 NM		0.9	
CATEGORY	A		B		C		D
 CIRCLING	3180-1¼ 1049 (1100-1¼)		3180-1½ 1049 (1100-1½)		3180-3 1049 (1100-3)		4180-3 2049 (2100-3)

