

APP CRS
346°

Rwy Idg
TDZE
6221

Apt Elev
6221

RNAV (GPS) RWY 34

AFTON MUNI (AFO)

NA

-22°C

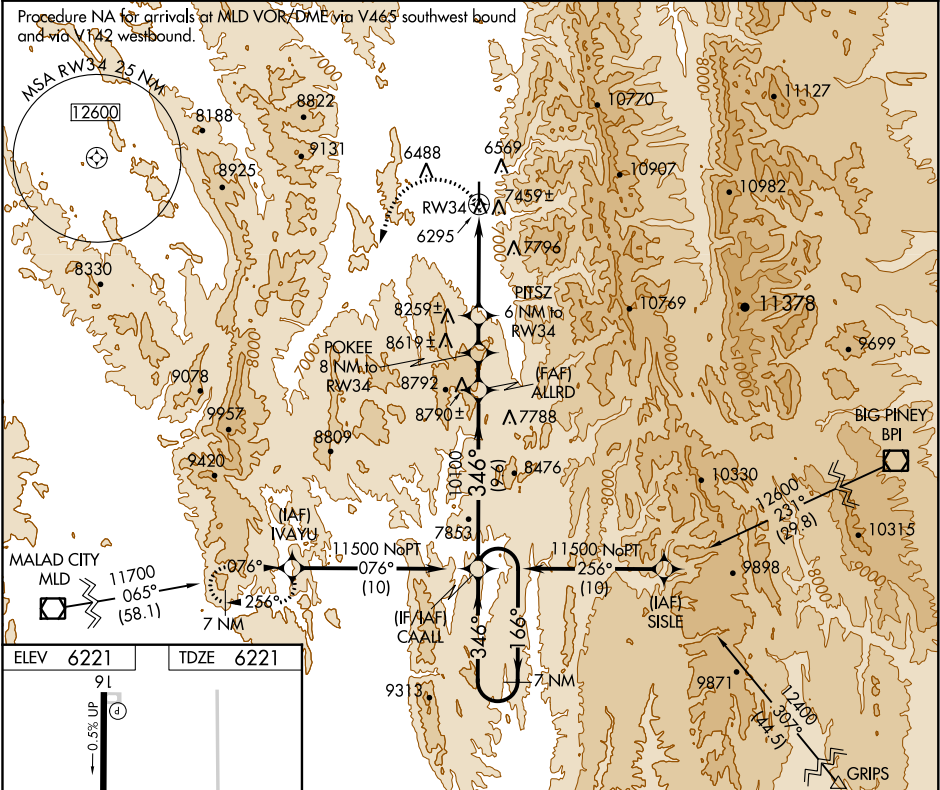
DME/DME RNP- 0.3 NA. Circling NA east of Rwy 16-34. Helicopter visibility reduction below 3/4 SM NA. If local altimeter setting not received, procedure NA.

MISSED APPROACH: Climbing left turn to 11500 direct IVAYU and hold.

AWOS-3P
119.025

SALT LAKE CENTER
128.35 381.6

UNICOM
122.8 (CTAF) 0



ELEV 6221 TDZE 6221

7 NM Holding Pattern

CAALL

ALLRD

POKEE 8 NM to RWY34

PITSZ 6 NM to RWY34

IVAYU 11500

VGSI and descent angles not coincident (VGSI Angle 3.00/TCH 40).

11500 166° 346° 346° 10100 9300 8660 3.76° 3.07° TCH 45 RWY34

9.6 NM 2 NM 2 NM 1.7 NM 4.3 NM

CATEGORY	A	B	C	D
LNAV MDA	7620-1 1/4 1399 (1400-1 1/4)	7620-1 1/2 1399 (1400-1 1/2)	7620-3 1399 (1400-3)	NA
CIRCLING	7620-1 1/4 1399 (1400-1 1/4)	7620-1 1/2 1399 (1400-1 1/2)	7620-3 1399 (1400-3)	NA