

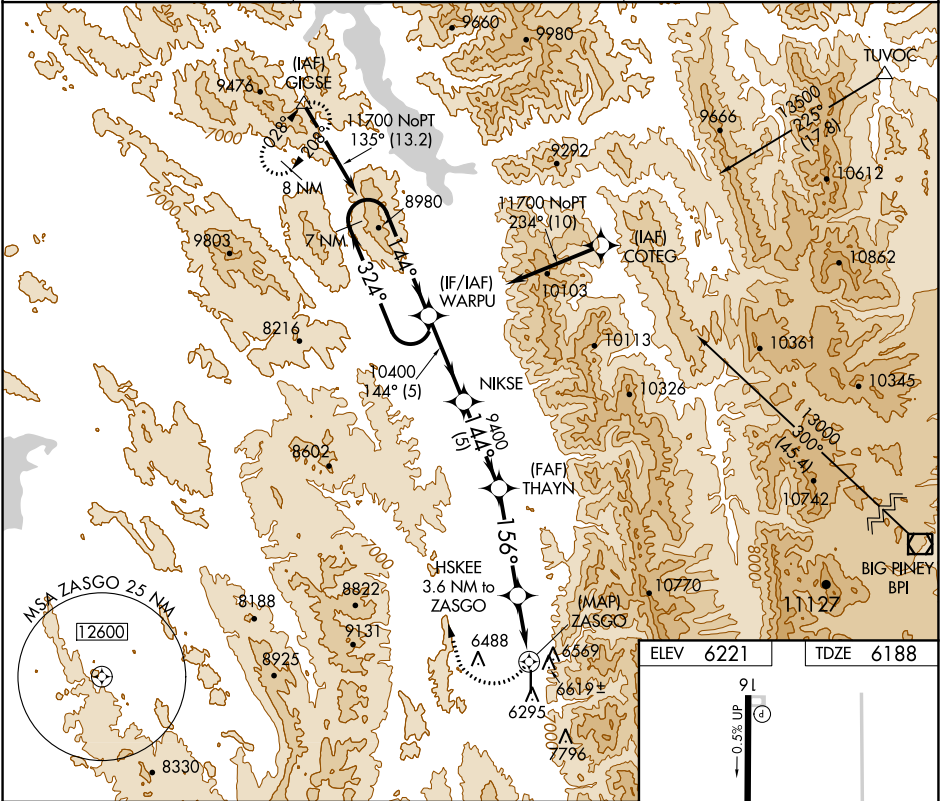
APP CRS 156°	Rwy Idg 7025
	TDZE 6188
	Apt Elev 6221

RNAV (GPS) RWY 16

AFTON MUNI (AFO)

RNP APCH.	If local altimeter setting not received, procedure NA. Circling NA east of Rwy 16-34. Rwy 16 helicopter visibility reduction below ¾ SM NA.	MISSED APPROACH: Climbing right turn to 11700 direct GIGSE and hold.
-----------	---------------------------------------------------------------------------------------------------------------------------------------------------	-------------------------------------------------------------------------

AWOS-3P 119.025	SALT LAKE CENTER 128.35 381.6	UNICOM 122.8 (CTAF) 0
---------------------------	-----------------------------------------	---------------------------------



7 NM Holding Pattern		WARPU	VGS and descent angles not coincident (VGS Angle 3.00/TCH 40).		11700	GIGSE
11700		324°	144°	144°	10400	
					9400	
					2.99° TCH 47	
					156°	
					7520	
					2.3 NM to ZASGO	
					0.5	
CATEGORY	A	B	C	D		
LNVA MDA	7140-1¼ 952 (1000-1¼)	7140-1½ 952 (1000-1½)	7140-3 952 (1000-3)	NA		
CIRCLING	7140-1¼ 919 (1000-1¼)	7140-1½ 919 (1000-1½)	7140-3 919 (1000-3)	NA		

