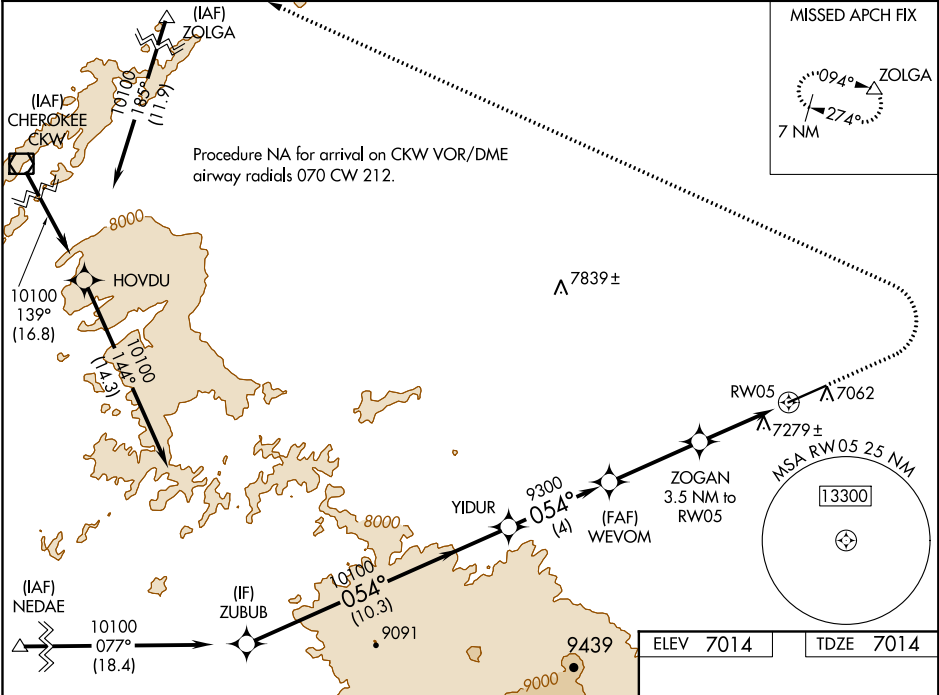


WAAS CH <b>65820</b> <b>W05A</b>	APP CRS <b>054°</b>	Rwy Idg TDZE Apt Elev	<b>8801</b> <b>7014</b> <b>7014</b>
--	------------------------	-----------------------------	---

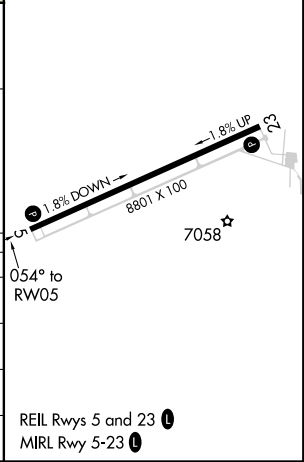
**RNAV (GPS) RWY 5**  
SHIVELY FIELD (SAA)

RNP APCH. ▼ For uncompensated Baro-VNAV systems, LNAV/VNAV NA below -28°C or above 54°C. ▲ MISSED APPROACH: Climb to 7800 then climbing left turn to 11000 direct ZOLGA and hold.	
---	--

AWOS-3PT <b>118.175</b>	DENVER CENTER <b>132.1 254.35</b>	UNICOM <b>122.8 (CTAF) 0</b>
----------------------------	--------------------------------------	---------------------------------



VGSI and RNAV glidepath not coincident (VGSI Angle 3.00/TCH 49).																													
<table><tr><td>ZUBUB</td><td>YIDUR</td><td>WEVOM</td><td>ZOGAN</td><td>ZOLGA</td></tr><tr><td>10100</td><td>10100</td><td>9300</td><td>3.5 NM to RW05</td><td>*LNAV only</td></tr><tr><td>GP 3.00°</td><td>054°</td><td>054°</td><td>*1.7 NM to RW05</td><td></td></tr><tr><td>TCH 40</td><td></td><td>*8160</td><td></td><td></td></tr><tr><td>10.3 NM</td><td>4 NM</td><td>3.6 NM</td><td>1.8 NM</td><td>1.7 NM</td></tr></table>					ZUBUB	YIDUR	WEVOM	ZOGAN	ZOLGA	10100	10100	9300	3.5 NM to RW05	*LNAV only	GP 3.00°	054°	054°	*1.7 NM to RW05		TCH 40		*8160			10.3 NM	4 NM	3.6 NM	1.8 NM	1.7 NM
ZUBUB	YIDUR	WEVOM	ZOGAN	ZOLGA																									
10100	10100	9300	3.5 NM to RW05	*LNAV only																									
GP 3.00°	054°	054°	*1.7 NM to RW05																										
TCH 40		*8160																											
10.3 NM	4 NM	3.6 NM	1.8 NM	1.7 NM																									
CATEGORY	A	B	C	D																									
LPV DA	7264-7/8 250 (300-7/8)																												
LNAV/VNAV DA	7513-13/4 499 (500-13/4)																												
LNAV MDA	7620-1 606 (700-1)		7620-13/4 606 (700-13/4)																										
CIRCLING	7620-1 606 (700-1)		7620-13/4 606 (700-13/4)	7620-2 606 (700-2)																									



NW-1, 03 DEC 2020 to 31 DEC 2020

NW-1, 03 DEC 2020 to 31 DEC 2020