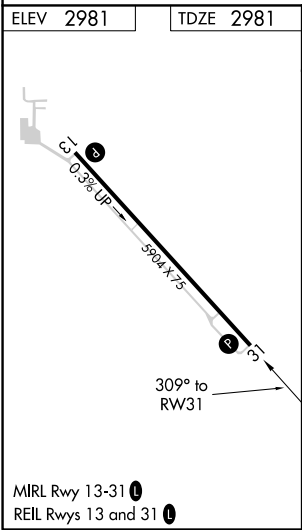
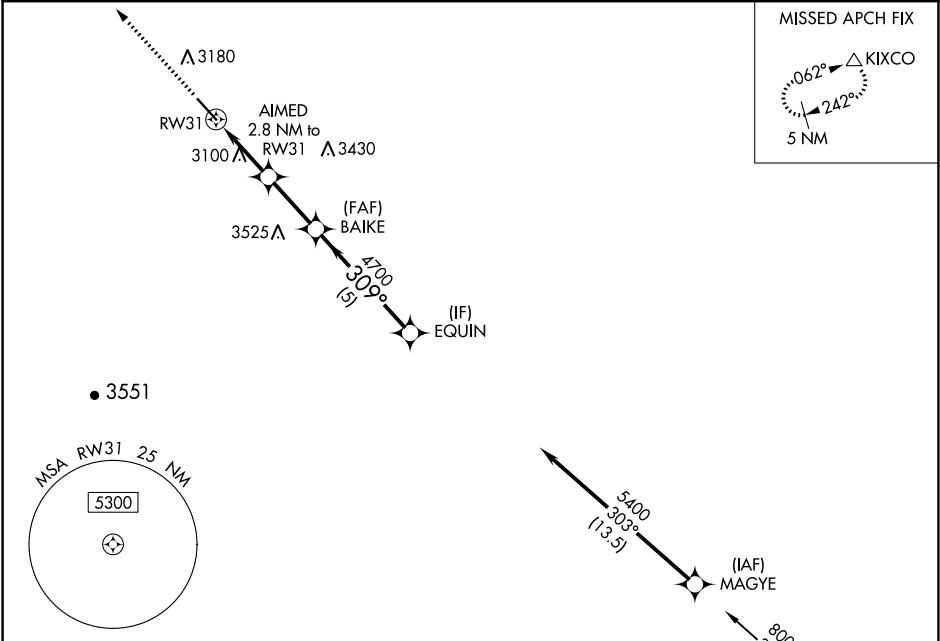


WAAS CH 50138 W31A	APP CRS 309°	Rwy Idg TDZE Apt Elev	5904 2981 2981
--	------------------------	-----------------------------	---

RNAV (GPS) RWY 31
BAKER MUNI (BHK)

RNP APCH.	MISSED APPROACH: Climb to 3500 then climbing right turn 6000 direct KIXCO and hold.
For uncompensated Baro-VNAV systems, LNAV/VNAV NA below -27°C or above 54°C. When local altimeter setting not received, procedure NA.	

ASOS 135.475	SALT LAKE CENTER 126.85 305.2	CTAF 122.9 0
------------------------	---	------------------------



ELEV 2981	TDZE 2981	Procedure NA for arrivals at DIXLE on V491 southbound and on V120 eastbound.			
3500	6000	KIXCO	AIMED 2.8 NM to RWY 31	BAIKE 4700	EQUIN 5400
*LNAV only.			*1.1 NM to RWY 31		
			1.1 NM	1.7 NM	2.5 NM
					5 NM
					GP 3.00° TCH 30
CATEGORY	A	B	C	D	
LPV DA	3231-7/8	250 (300-7/8)			
LNAV/VNAV DA	3267-1	286 (300-1)			
LNAV MDA	3360-1	379 (400-1)			
CIRCLING	3540-1	559 (600-1)	3620-1 3/4 639 (700-1 3/4)	3820-2 3/4 839 (900-2 3/4)	