

WAAS CH 58326 W11A	APP CRS 110°	Rwy Idg TDZE Apt Elev 8900 7096 7096
--	------------------------	--

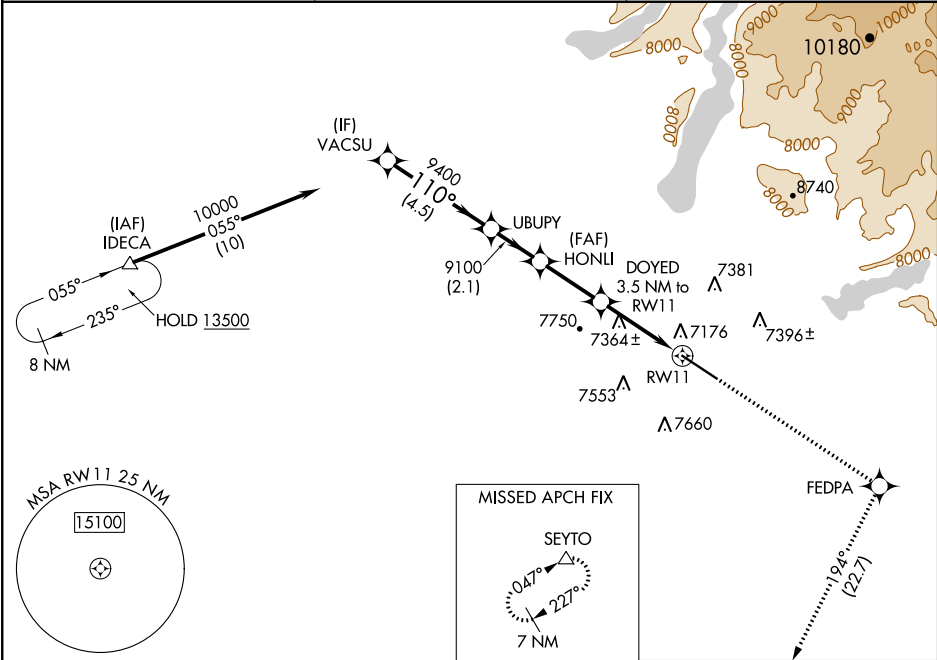
RNAV (GPS) RWY 11
RALPH WENZ FIELD (PNA)

Baro-VNAV NA. When local altimeter setting not received, use Big Piney altimeter setting and increase all DA 58 feet and all MDA 60 feet; increase LPV and LNAV/VNAV all Cats, LNAV and Circling Cat C/D visibility ¼ mile. Circling NA south of Rwy 11/29. DME/DME RNP-0.3 NA. VDP NA with Big Piney altimeter setting.

ODALS

MISSED APPROACH: Climb to 10000 direct FEDPA and on track 194° to SEYTO and hold.

AWOS-3 118.325	SALT LAKE CENTER 128.35 239.25	UNICOM 122.8 (CTAF) 0
--------------------------	--	---------------------------------



VGSI and RNAV glidepath not coincident (VGSI Angle 2.83/TCH 40).				10000 ↑		FEDPA ✧		tr 194° ↻		SEYTO △		ELEV 7096	TDZE 7096
VACSU				UBUPY		HONLI		DOYED 3.5 NM to RW11		*LNAV only.			
10000				9400		9100		9100		*8260			
GP 3.00° TCH 55				4.5 NM		2.1 NM		2.6 NM		2 NM		1.5 NM	
CATEGORY	A		B		C		D						
LPV DA	7346-¾ 250 (300-¾)												
LNAV/ VNAV DA	7355-¾ 259 (300-¾)												
LNAV MDA	7620-1 524 (600-1)				7620-1½ 524 (600-1½)								
CIRCLING	7620-1 524 (600-1)				7640-1½ 544 (600-1½)				7720-2 624 (700-2)				