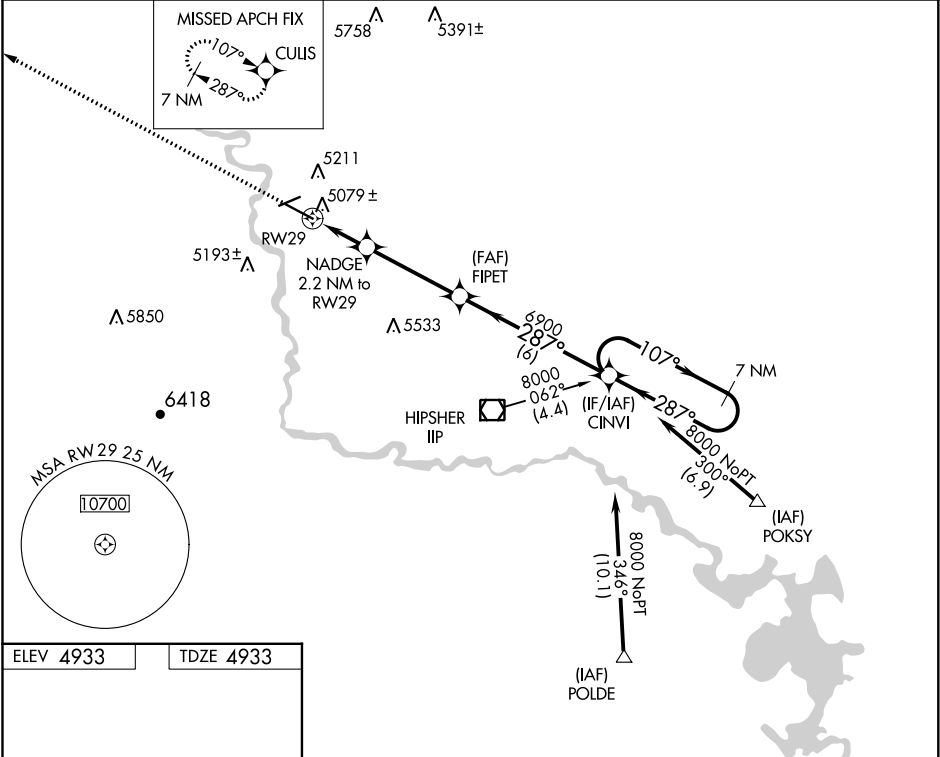


WAAS CH 61018 W29A	APP CRS 287°	Rwy Idg 6534 TDZE 4933 Apt Elev 4933
--	------------------------	---

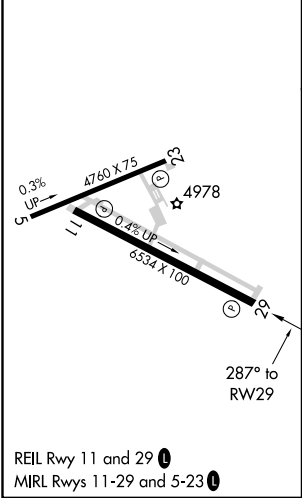
RNAV (GPS) RWY 29
CONVERSE COUNTY (DGW)

For uncompensated Baro-VNAV systems, LNAV/VNAV NA below -24°C (-11°F) or above 39°C (102°F). DME/DME RNP-0.3 NA.	MISSED APPROACH: Climb to 8000 direct CULIS and hold.
---	---

ASOS 135.225	DENVER CENTER 135.6 363.025	UNICOM 122.8 (CTAF) 0
------------------------	---------------------------------------	---------------------------------



ELEV 4933	TDZE 4933
-----------	-----------



8000	CULIS	*LNAV only	NADGE 2.2 NM to RWY 29	FIPET 6900	CINVI 7 NM Holding Pattern	107°	287°	8000	GP 3.00° TCH 39
CATEGORY	A	B	C	D					
LPV DA	5133-3/4				200 (200-3/4)				
LNAV/VNAV DA	5369-1 1/2				436 (500-1 1/2)				
LNAV MDA	5440-1		507 (600-1)		5440-1 1/2		507 (600-1 1/2)		
CIRCLING	5520-1		587 (600-1)		5520-1 1/2		5560-2		
					587 (600-1 1/2)		627 (700-2)		

NW-1, 03 DEC 2020 to 31 DEC 2020

NW-1, 03 DEC 2020 to 31 DEC 2020