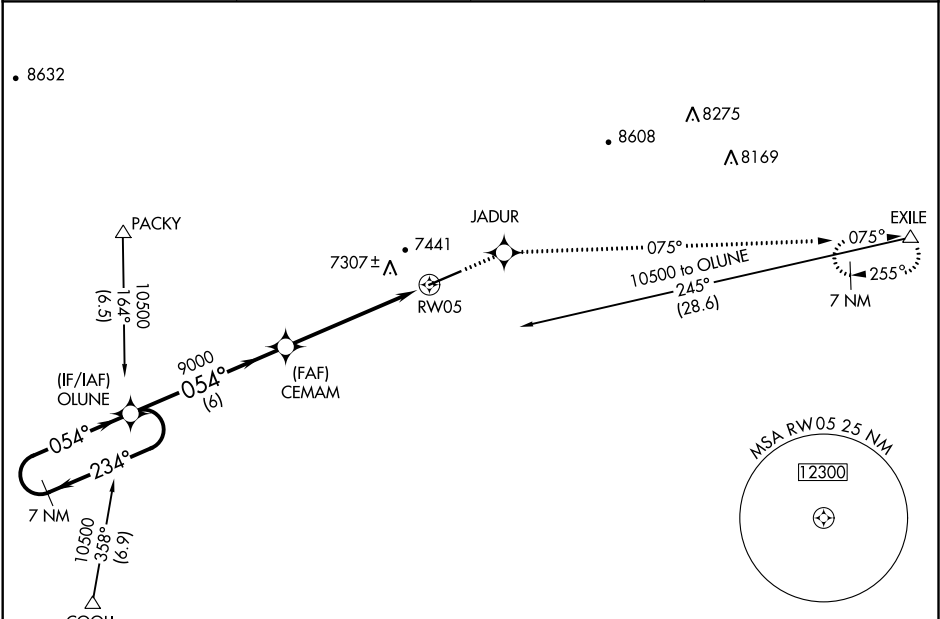


WAAS CH 78302 W05A	APP CRS 054°	Rwy Idg TDZE 7141 Apt Elev 7143
--	------------------------	---

RNAV (GPS) RWY 5

EVANSTON-UINTA COUNTY BURNS FIELD (E V W)

RNP APCH. ▼ If local altimeter setting not received, procedure NA. For uncompensated Baro-VNAV systems, LNAV/VNAV NA below -29°C (-20°F) or above 34°C (94°F).		MISSED APPROACH: Climb to 12000 direct JADUR and via 075° track to EXILE and hold, continue climb-in-hold to 12000.	
ASOS 120.0	SALT LAKE CENTER 127.7 354.125	GCO 121.72	UNICOM 123.0 (CTAF) 0



ELEV 7143

TDZE 7141

VGSI and RNAV glidepath not coincident
(VGSI Angle 3.00/TCH 45).

7 NM Holding Pattern

OLUNE

CEMAM

JADUR

EXILE

GP 3.00°
TCH 55

6 NM

4.8 NM

0.8 NM

*LNAV only

*0.8 NM to RW05

RW05

7300 X 100

7200

054° to RW05

CATEGORY	A	B	C	D
LPV DA		7391-3/4	250 (300-3/4)	
LNAV/VNAV DA		7643-13/4	502 (500-13/4)	
LNAV MDA		7440-1	299 (300-1)	

REIL Rwy 5 **0**
HIRL Rwy 5-23 **0**