

LOC/DME I-EVW 108.9 Chan 26	APP CRS 234°	Rwy Idg TDZE Apt Elev	7300 7143 7143
---	------------------------	-----------------------------	---

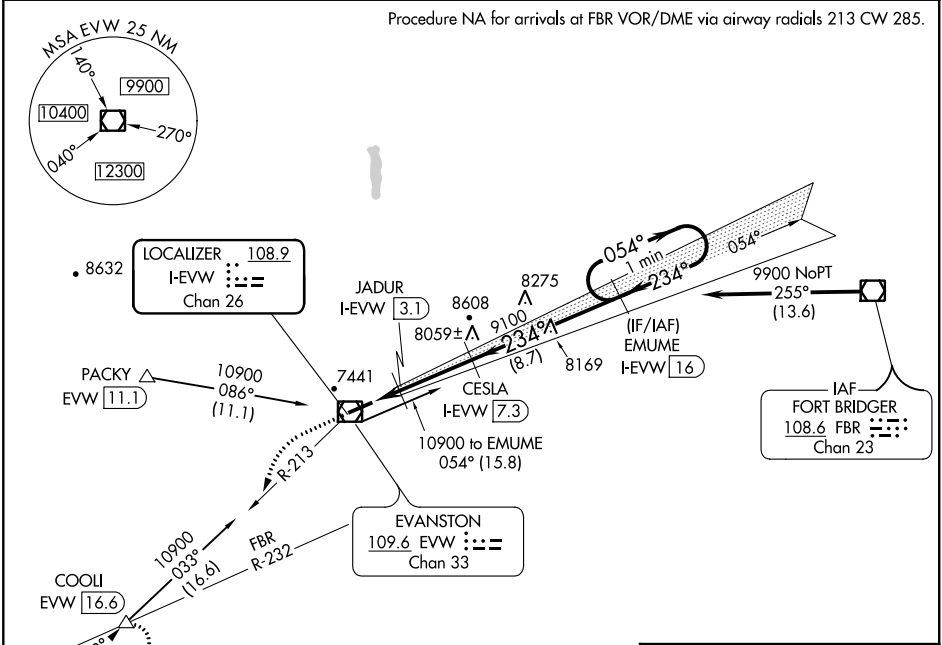
ILS or LOC/DME RWY 23
EVANSTON-UINTA COUNTY BURNS FIELD (E V W)

⚠ For inoperative MALSR, increase S-LOC 23 Cat D visibility to 1 mile. When local altimeter setting not received, procedure NA.

MALSR

MISSED APPROACH: Climb to 7600 then climbing left turn to 12000 via EVW VOR/DME R-213 to COOLI/EVW VOR/DME 16.6 DME and hold, continue climb-in-hold to 12000.

ASOS 120.0	SALT LAKE CENTER 127.7 354.125	GCO 121.72	UNICOM 123.0 (CTAF) 0
----------------------	--	----------------------	---------------------------------



R-213 ⁰³³

213°

9195

10359

7600
↑

12000
EVW
R-213

COOLI
△

Use I-EVW DME when on the localizer course.
*LOC only

CESLA
I-EVW 7.3

EMUME
I-EVW 16

One Minute
Holding Pattern

JADUR
I-EVW 3.1

I-EVW 2.2

I-EVW 1.4

9100

234°

054°

9900

9100

7700*

GS 3.00°
TCH 47

0.8

0.9 NM

4.2 NM

8.7 NM

CATEGORY	A	B	C	D
S-ILS 23	7343-½ 200 (200-½)			
S-LOC 23	7440-½ 297 (300-½)			7440-¾ 297 (300-¾)
CIRCLING	7580-1 437 (500-1)	7720-1 577 (600-1)	7760-1¾ 617 (700-1¾)	7760-2 617 (700-2)

ELEV 7143

TDZE 7143

234° 5.9 NM
from FAF

7300 X 100

7200

REIL Rwy 5

HIRL Rwy 5-23