

APP CRS	Rwy Idg	5703
284°	TDZE	4202
	Apt Elev	4207

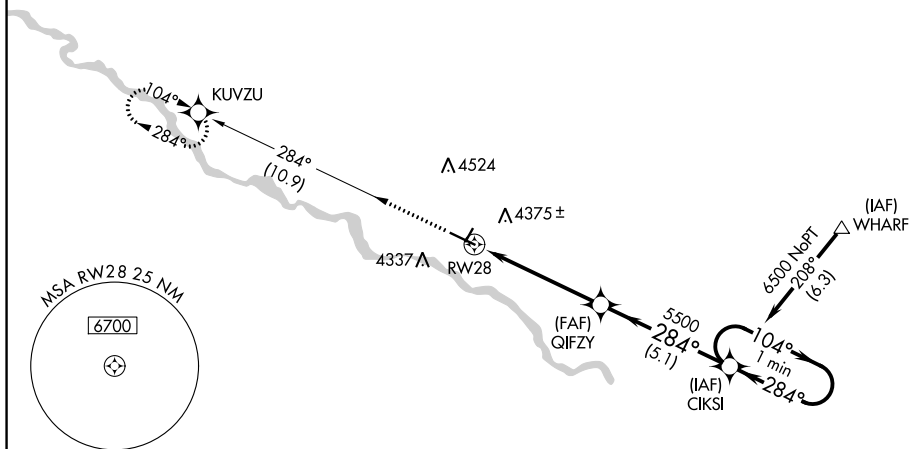
GPS RWY 28

TORRINGTON MUNI (TOR)

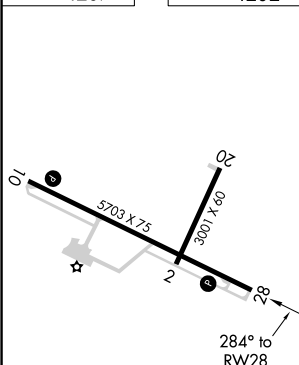
T	Procedure NA at night.
A NA	Helicopter visibility reduction below 1 SM NA.

MISSED APPROACH: Climb to 6500 via 284° course to KUVZU WP and hold.

ASOS
118.375

DENVER CENTER
127.95 338.2UNICOM
122.8 (CTAF) **L**

ELEV	4207		TDZE	4202
------	------	--	------	------

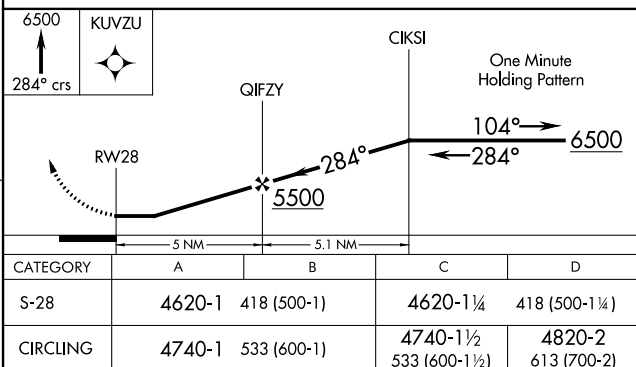


REIL Rwy 28 **L**
MIRL Rwy 10-28 **L**

TORRINGTON, WYOMING

Orig-D 28APR16

Λ 5396



TORRINGTON MUNI (TOR)

GPS RWY 28

42°04'N-104°09'W

NW-1, 03 DEC 2020 to 31 DEC 2020

NW-1, 03 DEC 2020 to 31 DEC 2020