

APP CRS	Rwy Idg	2758
071°	TDZE	193
	Apt Elev	193

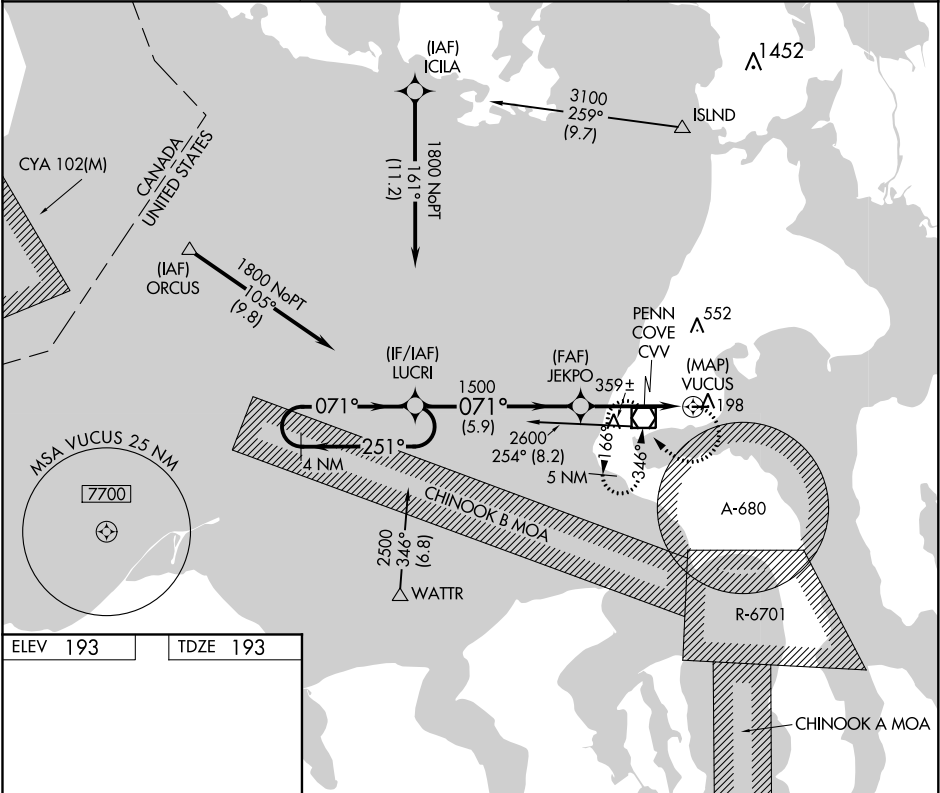
RNAV (GPS) RWY 7

AJ EISENBERG (OKH)

**⚠** DME/DME RNP-0.3 NA. Helicopter visibility reduction below 3/4 SM NA. Circling north of Rwy 7-25 NA at night. When local altimeter setting not received, use Whidbey Island NAS altimeter setting and increase all MDAs 40 feet. Night landing: Rwy 25 NA.

**⚠** MISSED APPROACH: Climbing right turn to 3400 direct CVV VOR/DME and hold, continue climb-in-hold to 3400.

AWOS-3 132.775	WHIDBEY APP CON 118.2 285.65	UNICOM 122.8 (CTAF) <b>0</b>
-------------------	---------------------------------	---------------------------------



ELEV 193

TDZE 193

071° to VUCUS

3265 X 25

1.6% UP

LIRL Rwy 7-25 **0**

4 NM Holding Pattern		LUCRI	Descent Angle NA.		3400	CVV
1800		251°	071°	JEKPO	VUCUS	
		1500				
		5.9 NM	4 NM	0.1		
CATEGORY	A	B	C	D		
LNAV MDA	620-1	427 (500-1)	NA			
CIRCLING	620-1	660-1	NA			
	427 (500-1)	467 (500-1)				

NW-1, 03 DEC 2020 to 31 DEC 2020

NW-1, 03 DEC 2020 to 31 DEC 2020