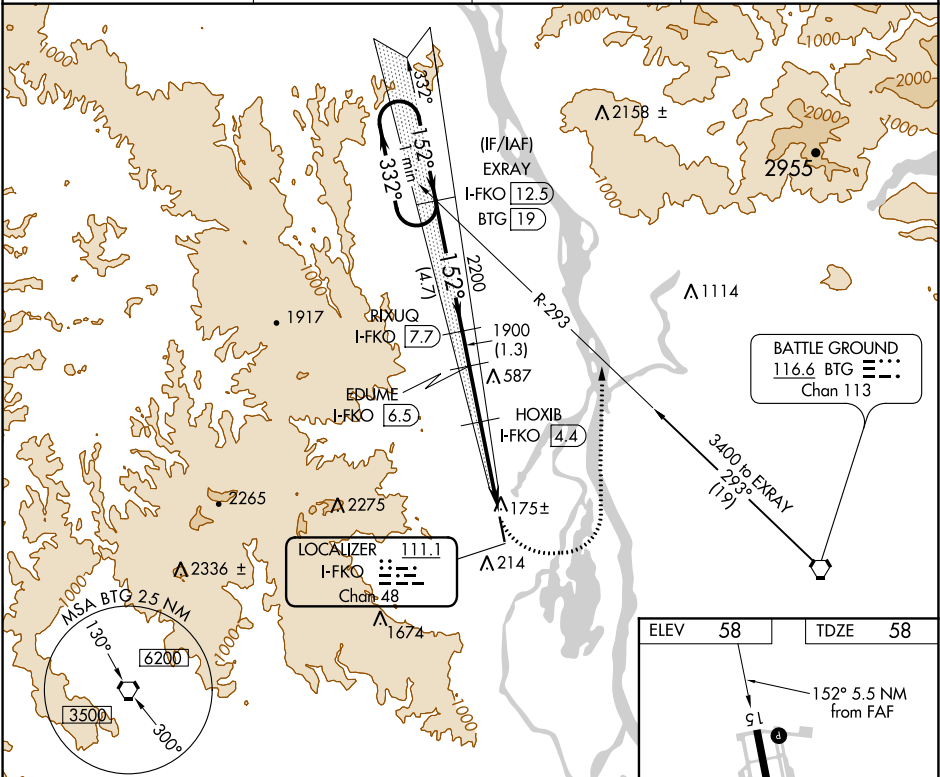


LOC/DME	I-FKO	APP CRS	Rwy Idg	5100
111.1		152°	TDZE	58
Chan 48			Apt Elev	58

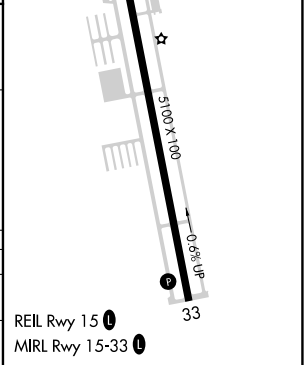
LOC/DME RWY 15
SCAPOOSE INDUSTRIAL AIRPARK (SPB)

<p>⚠ Circling NA west of Rwy 15-33. When local altimeter setting not received, use Portland Intl altimeter setting and increase all MDA 40 feet; increase S-15 Cat C/D visibility and Circling Cat C visibility 1/8 mile, Cat D visibility 1/4 mile. Helicopter visibility reduction below 1 SM NA. Night Landing Rwy 15 NA.</p>	<p>MISSED APPROACH: Climbing left turn to 3000 on heading 020° and on BTG VORTAC R-293 to EXRAY/I-FKO 12.5 DME and hold.</p>
---	---

ASOS 135.875	PORTLAND APP CON 124.35 299.2	CLNC DEL 121.65	UNICOM 122.8 (CTAF) 0
-----------------	----------------------------------	--------------------	--------------------------



One Minute Holding Pattern				EXRAY I-FKO 12.5		RIXUQ I-FKO 7.7		EDUME I-FKO 6.5		HOXIB I-FKO 4.4		BTG R-293		EXRAY I-FKO 12.5	
3000 ← 332° 152° →				152°		2200		1900		3.07° TCH 41		1200			
VGSJ and descent angles not coincident (VGSJ Angle 3.73/TCH 41).															
				4.7 NM		1.3 NM		2.1 NM		C		3.5 NM		D	
CATEGORY		A		B		C		D							
S-15		660-1		602 (700-1)		660-1¾		602 (700-1¾)							
CIRCLING		660-1		602 (700-1)		660-1¾ 602 (700-1¾)		860-2½ 802 (900-2½)							



NW-1, 03 DEC 2020 to 31 DEC 2020

NW-1, 03 DEC 2020 to 31 DEC 2020