

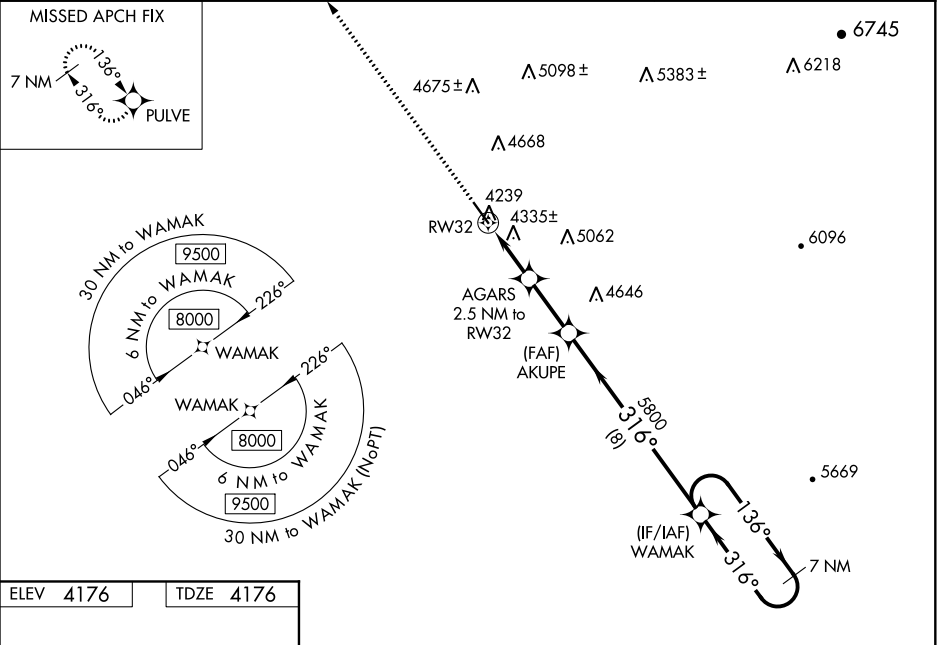
WAAS CH <b>61225</b> <b>W32A</b>	APP CRS <b>316°</b>	Rwy ldg TDZE <b>4176</b> Apt Elev <b>4176</b>
--	------------------------	---

RNAV (GPS) RWY 32

MONDELL FIELD (ECS)

RNP APCH. ⚠ When Newcastle altimeter setting not received, procedure NA. For uncompensated Baro-VNAV systems, LNAV/VNAV NA below -23°C (-9°F) or above 53°C (128°F). Circling NA northeast of Rwy 14-32. For inop ODAL, increase LNAV/VNAV visibility all Cats and LNAV Cats C/D ½ mile. Inop table does not apply to LPV all Cats and LNAV Cats A/B.	ODALS 	MISSED APPROACH: Climb to 9500 direct PULVE and hold, continue climb-in-hold to 9500.
--	-----------	---

AWOS-3PT <b>118.0</b>	DENVER CENTER <b>127.95 338.2</b>	UNICOM <b>122.8 (CTAF)</b>
--------------------------	--------------------------------------	-------------------------------



<div> <div>9500</div> <div>↑</div> </div> <div> <div>PULVE</div> <div>✧</div> </div>					
*LNAV only.		<div> <div>AGARS</div> <div>2.5 NM to RW32</div> </div> <div> <div>AKUPE</div> <div>5800</div> </div> <div> <div>WAMAK</div> <div>7 NM Holding Pattern</div> </div>			
<div> <div>*1.2 NM to RW32</div> <div>1.2 NM</div> </div> <div> <div>1.3 NM</div> <div>2.5 NM</div> </div> <div> <div>8 NM</div> </div>		<div> <div>316°</div> <div>5800</div> </div>		<div> <div>136°</div> <div>8000</div> </div> <div> <div>←316°</div> </div>	
				<div> <div>GP 3.00°</div> <div>TCH 43</div> </div>	
CATEGORY	A	B	C	D	
LPV DA	4385-1 209 (300-1)				
LNAV/VNAV DA	4618-1½ 442 (500-1½)				
LNAV MDA	4600-1 424 (500-1)		4600-1½ 424 (500-1½)		
CIRCLING	4700-1 524 (600-1)		4720-1½ 544 (600-1½)		5000-2¾ 824 (900-2¾)

REIL Rwy 14

MIRL Rwy 14-32