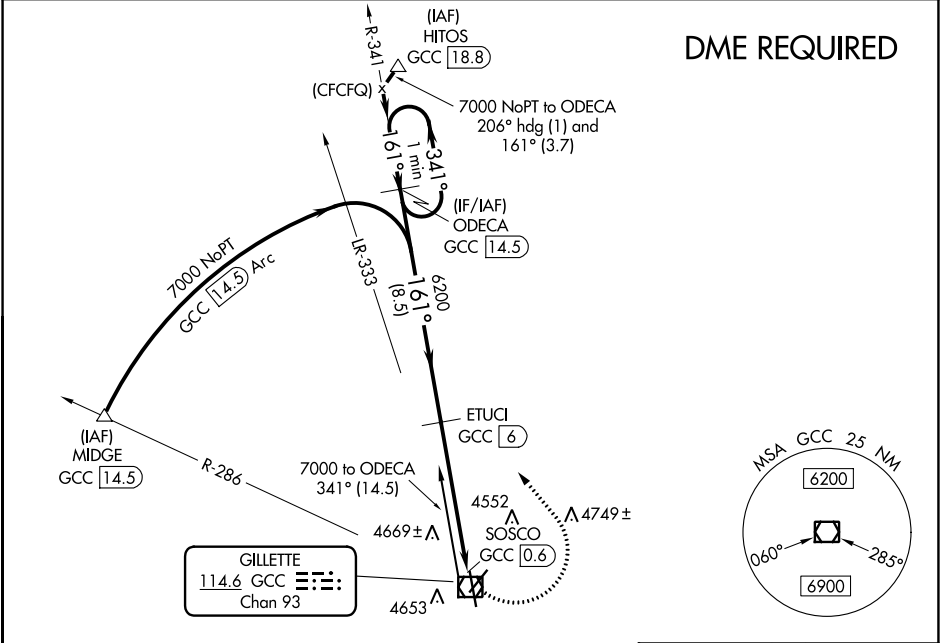


VOR/DME GCC	APP CRS	Rwy Idg	7500
114.6	161°	TDZE	4337
Chan 93		Apt Elev	4364

VOR RWY 16
NORTHEAST WYOMING RGNL (GCC)

<p>V A</p> <p>Circling to Rwy 3 NA at night. DME required. Rwy 16 helicopter visibility reduction below ¾ SM NA.</p>	<p>MISSED APPROACH: Climbing left turn to 7000 on heading 311° and GCC R-341 to ODECA/14.5 DME and hold.</p>
--	--

ASOS 124.175	DENVER CENTER 135.6 363.025	UNICOM 122.95	CTAF 118.5 0
-----------------	--------------------------------	------------------	------------------------



ELEV 4364	D TDZE 4337
5179	4970
5296	4902
	5057
	5251

