

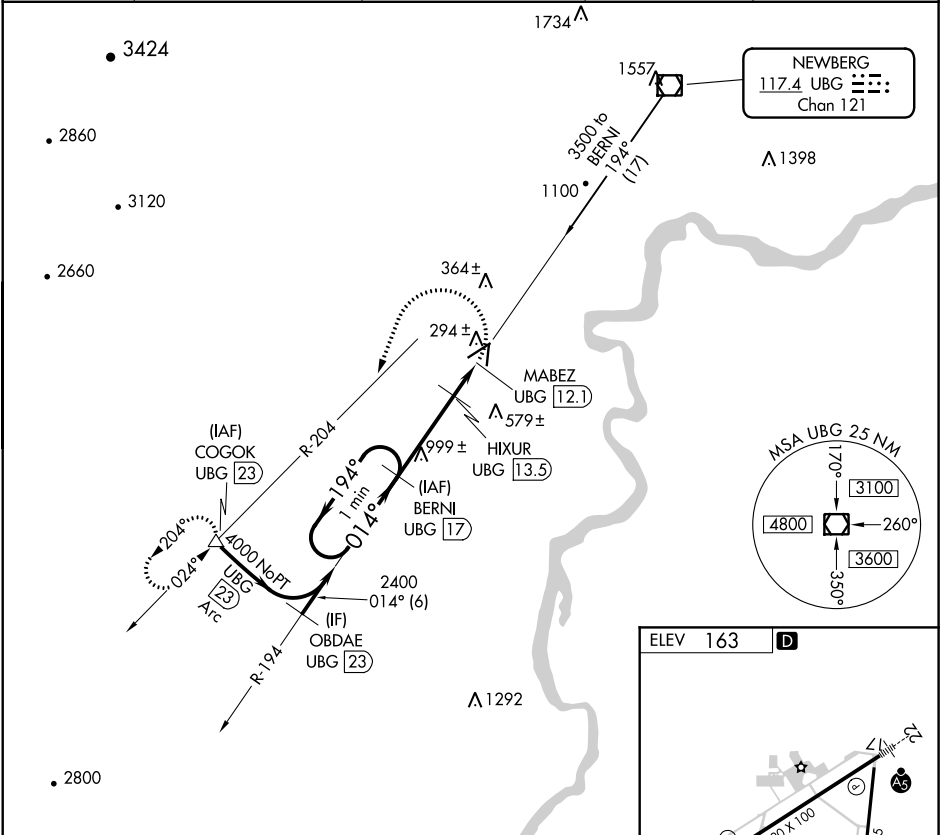
VOR/DME UBG 117.4 Chan 121	APP CRS 014°	Rwy Idg TDZE Apt Elev N/A N/A 163
--	------------------------	---

VOR/DME-B
MC MINNVILLE MUNI (MMV)

⚠ When local altimeter setting not received use Aurora State altimeter setting and increase all MDA 60 feet and all visibility ¼ mile.

MISSED APPROACH: Climbing left turn to 4800 via heading 180° and UBG VOR/DME R-204 to COGOK/UBG 23 DME and hold, continue climb-in-hold to 4800. When authorized by ATC, climb-in-hold to 6000.

ASOS 135.675	PORTLAND APP CON 126.0 284.6 (NORTH)	SEATTLE CENTER 125.8 291.7 (SOUTH)	CLNC DEL 118.35	UNICOM 123.0 (CTAF) 0
------------------------	--	--	---------------------------	--



One Minute Holding Pattern

BERNI UBG 17

4800

hdg 180°

UBG R-204

COGOK

HIXUR UBG 13.5

MABEZ UBG 12.1

CATEGORY	A	B	C	D
CIRCLING	840-1	677 (700-1)	840-2 677 (700-2)	880-2¼ 717 (800-2¼)

