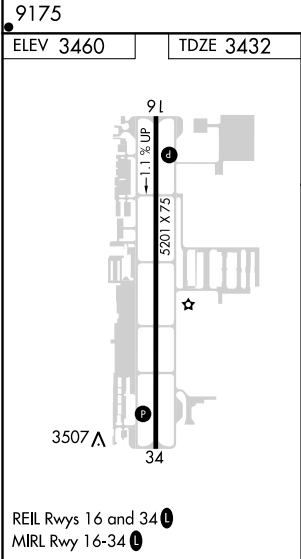
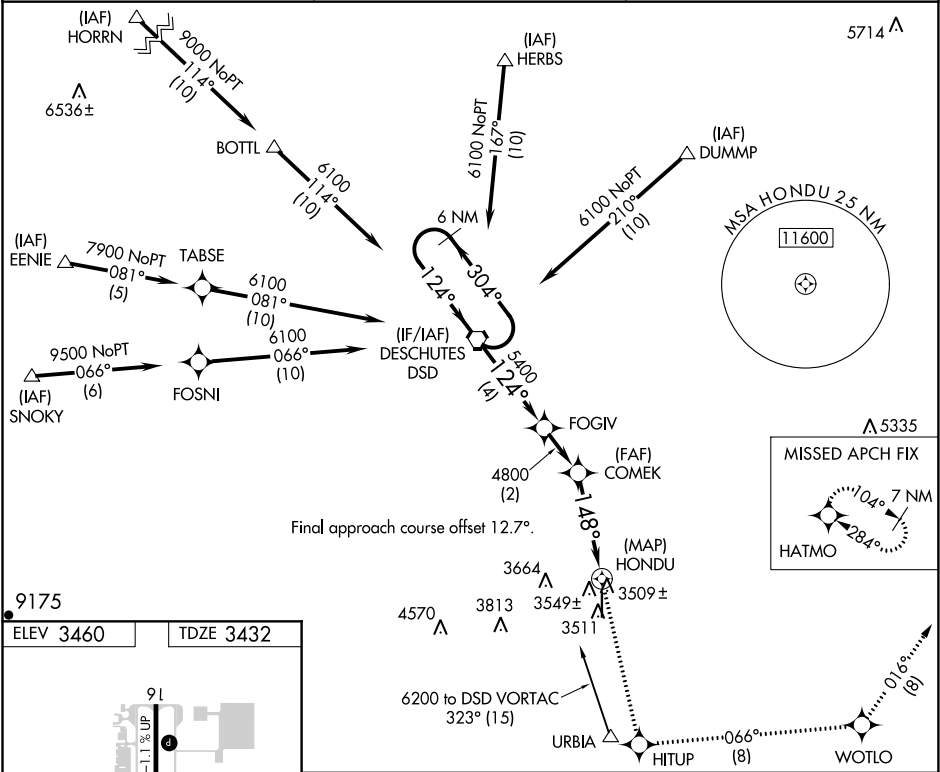


| | | |
|--|------------------------|---|
| WAAS CH 90137 W16B | APP CRS 148° | Rwy Idg TDZE 3432 Apt Elev 3460 |
|--|------------------------|---|

RNAV (GPS) Y RWY 16
BEND MUNI (BDN)

| | |
|--|--|
| <p>V DME/DME RNP -0.3 NA. When local altimeter setting not received, use Redmond altimeter setting and increase all MDA 80 feet, and LP and LNAV Cats C/D visibility ¼ mile, and Circling Cat C visibility ½ mile. Helicopter visibility reduction below 1 SM NA. Night landing: Rwy 16 NA.</p> | <p>MISSED APPROACH: Climb to 7600 direct HITUP and on track 066° to WOTLO and on track 016° to HATMO and hold, continue climb-in-hold to 7600.</p> |
|--|--|

| | | |
|--------------------------|---|---------------------------------|
| AWOS-3 134.425 | SEATTLE CENTER 126.15 269.475 | UNICOM 123.0 (CTAF) 0 |
|--------------------------|---|---------------------------------|



| | | | | | | | |
|----------------------|--------------------|--------------------|----------------------|----------------------|-----------------------------|---------|-------|
| 6 NM Holding Pattern | | DSD VORTAC | 7600 HITUP | tr 066° | WOTLO | tr 016° | HATMO |
| 6100 | | 304° | 124° | 124° | 148° | 148° | 016° |
| 4 NM | | 2 NM | 3.9 NM | 0.5 | Visual Segment - Obstacles. | | |
| CATEGORY | A | B | C | D | | | |
| LP MDA | 3760-1 | | 328 (300-1) | | | | |
| LNAV MDA | 3800-1 368 (400-1) | | 3800-1½ 368 (400-1½) | | | | |
| CIRCLING | 3940-1 480 (500-1) | 4000-1 540 (600-1) | 4120-1¾ 660 (700-1¾) | 4640-3 1180 (1200-3) | | | |