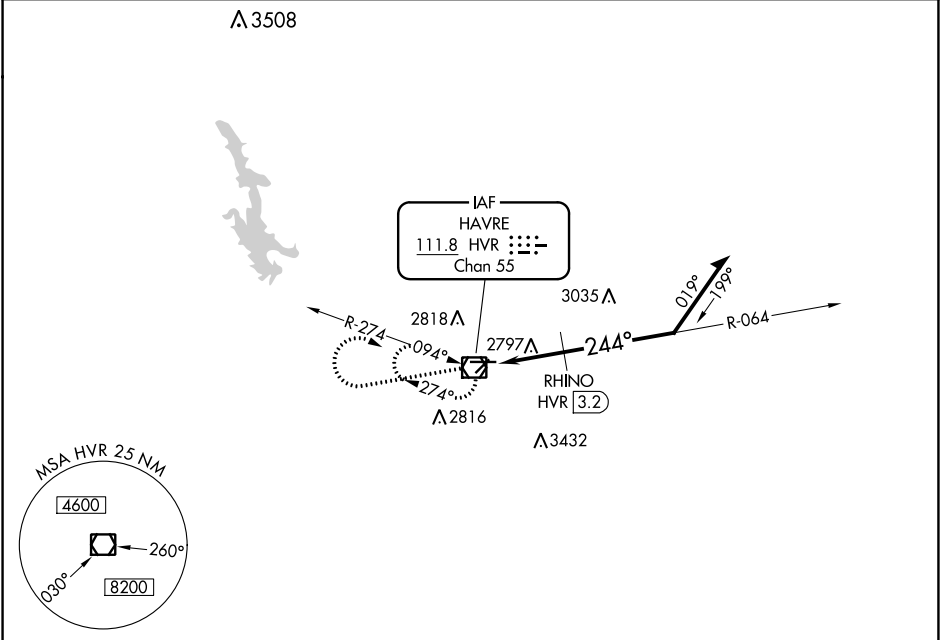


VOR/DME HVR	APP CRS	Rwy Idg	5205
111.8	244°	TDZE	2586
Chan 55		Apt Elev	2591

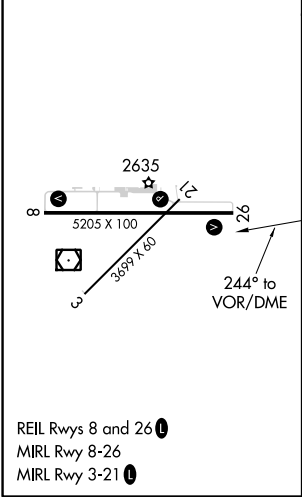
VOR RWY 26
HAVRE CITY-COUNTY (HVR)

MISSED APPROACH: Climb to 4500 then climbing right turn to 8000 direct HVR VOR/DME and hold, continue climb-in-hold to 8000.

ASOS 135.225	SALT LAKE CENTER 133.4 285.4	UNICOM 122.8 (CTAF) 0
-----------------	---------------------------------	--------------------------



ELEV 2591	D	TDZE 2586
-----------	---	-----------



4500	8000	HVR	10000	064°	064°	4500
VGSI and descent angles not coincident (VGSI Angle 3.00/TCH 37).		HVR VOR/DME		Remain within 10 NM		
		3.34° TCH 38		RHINO HVR 3.2		
		3.2 NM		3480		
CATEGORY	A	B	C	D		
S-26	3480-1¼	894 (900-1¼)	3480-2¾ 894 (900-2¾)	3480-3 894 (900-3)		
CIRCLING	3480-1¼	889 (900-1¼)	3480-2¾ 889 (900-2¾)	3480-3 889 (900-3)		
RHINO FIX MINIMUMS						
S-26	3060-1	474 (500-1)	3060-1¼ 474 (500-1¼)	3060-1½ 474 (500-1½)		
CIRCLING	3080-1	3120-1 489 (500-1)	3120-1½ 529 (600-1)	3180-2 589 (600-2)		

NW-1, 03 DEC 2020 to 31 DEC 2020

NW-1, 03 DEC 2020 to 31 DEC 2020