

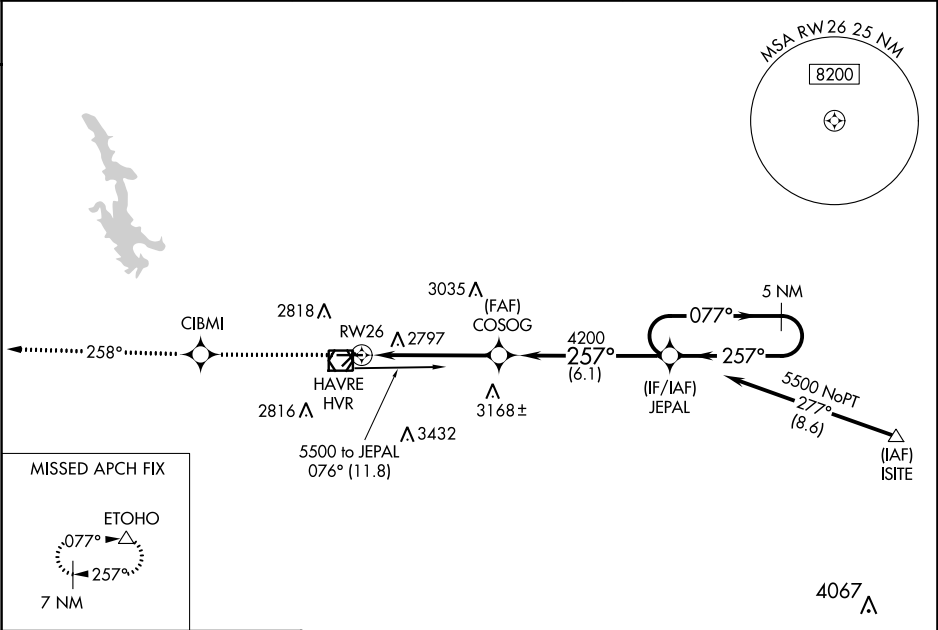
WAAS CH 48816 W26A	APP CRS 257°	Rwy Idg TDZE 2586 Apt Elev 2591
--	------------------------	---

RNAV (GPS) RWY 26

HAVRE CITY-COUNTY (HVR)

RNP APCH. <div><div>▽</div><div>❄️ -30°C</div></div>	For uncompensated Baro-VNAV systems, LNAV/VNAV NA below -20°C or above 54°C.	MISSED APPROACH: Climb to 8000 direct CIBMI and on track 258° to ETOHO and hold, continue climb-in-hold to 8000.
---	---	--

ASOS 135.225	SALT LAKE CENTER 133.4 285.4	UNICOM 122.8 (CTAF) 0
------------------------	--	---------------------------------



ELEV 2591	D	TDZE 2586
------------------	----------	------------------

