

WAAS CH 93620 W12A	APP CRS 123°	Rwy Idg TDZE 5001 2294 Apt Elev 2296
--	------------------------	--

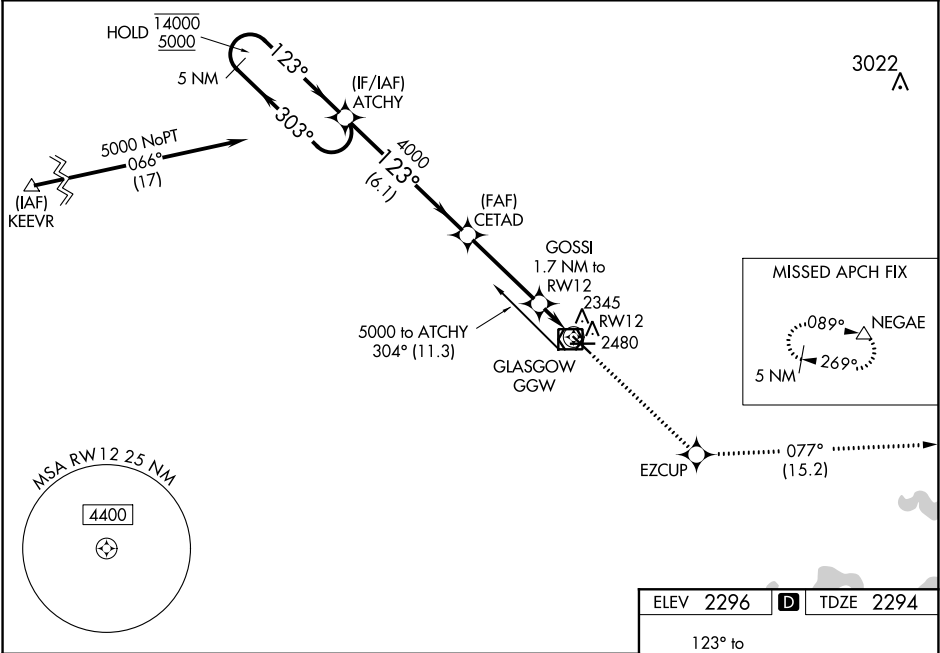
RNAV (GPS) RWY 12
WOKAL FIELD/GLASGOW-VALLEY COUNTY (GGW)

RNP APCH.

V For uncompensated Baro-VNAV systems, LNAV-VNAV NA below -14°C or above 54°C. When local altimeter setting not received, use Wolf Point altimeter setting and increase all DA 141 feet and all MDA 160 feet and increase LPV visibility all Cats ½ SM, LNAV/VNAV visibility all Cats ½ SM, LNAV visibility Cats C and D ½ SM, and Circling visibility Cats C and D ¼ SM. Baro-VNAV and VDP NA when using Wolf Point altimeter setting.

MISSED APPROACH:
Climb to 6000 direct
EZCUP and on track
077° to NEGAE
and hold.

ASOS 135.175	SALT LAKE CENTER 126.85 305.2	UNICOM 122.8 (CTAF) 0
------------------------	---	---------------------------------



5 NM Holding Pattern		ATCHY		6000 ↑		EZCUP ✦		tr 077°		NEGAE △	
14000 ← 303° 5000 → 123°		123°		CETAD 4000		GOSSI 1.7 NM to RW12 *0.9 NM to RW12		*LNAV only			
GP 3.00° TCH 40		4000		*2860		RW12		RW12			
		6.1 NM		3.5 NM		0.8		0.9			
CATEGORY	A	B	C	D							
LPV DA	2544-7/8 250 (300-7/8)										
LNAV/VNAV DA	2587-1 293 (300-1)										
LNAV MDA	2600-1	306 (400-1)			2600-7/8		306 (400-7/8)				
CIRCLING	2780-1	484 (500-1)			2780-1½ 484 (500-1½)		2860-2 564 (600-2)				

