

WAAS CH 50312 W35A	APP CRS 347°	Rwy Idg 5002 TDZE 295 Apt Elev 295
--	------------------------	---

RNAV (GPS) RWY 35

RNP APCH.

T Baro-VNAV NA when using McChord Field altimeter setting.
A For uncompensated Baro-VNAV systems, LNAV/VNAV NA below -15°C (5°F) or above 48°C (118°F). Circling NA east of Rwy 17-35. When local altimeter setting not received, use McChord Field altimeter setting and increase all DA 25 feet and all MDA 40 feet.

MISSED APPROACH: Climb to 4000 direct ECAZA and left turn via 230° track to CARRO and hold, continue climb-in-hold to 4000.

ATIS 124.05	SEATTLE APP CON 120.1 290.9	TACOMA TOWER ★ 118.5 (CTAF) 0 253.5	GND CON 121.8	UNICOM 122.95
-----------------------	---------------------------------------	---	-------------------------	-------------------------

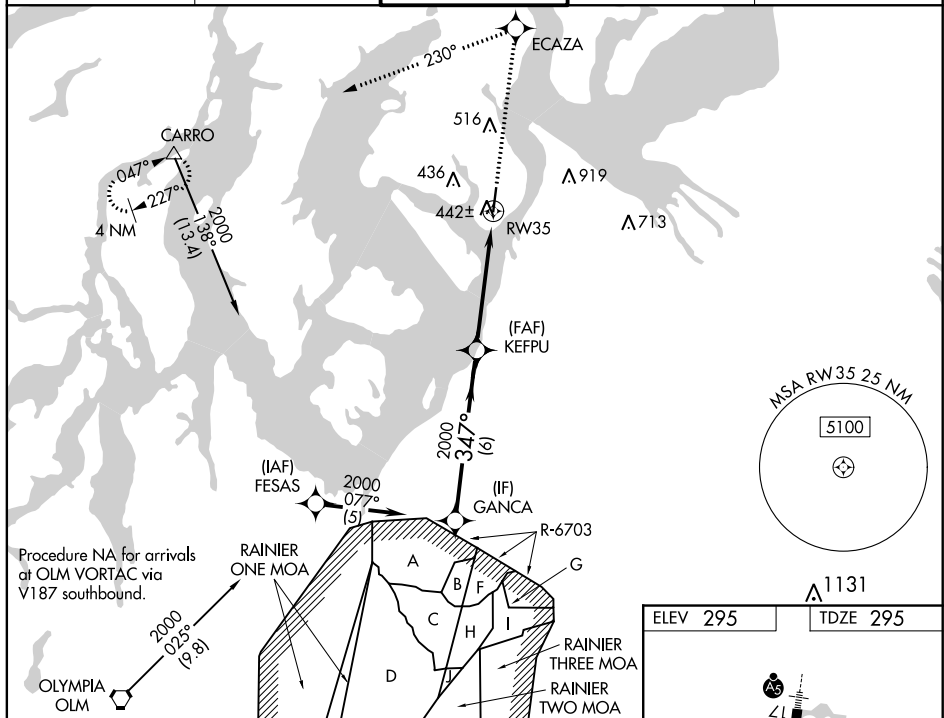


Diagram illustrating a 4th step climb profile for a 300° turn. The profile starts at 2000 ft, turns 347° to a heading of 300°, and then descends to 1600 ft. Key points include GANCA, KEFPU, and CARRO. The diagram shows a 6 NM segment at 2000 ft, a 3.5 NM segment at 1600 ft, and a 1.6 NM segment at 1600 ft. The turn is 230° from the previous heading. The diagram also shows the VGS and RNAV glidepath not coincident (VGS Angle 3.00°/TCH 45°).

