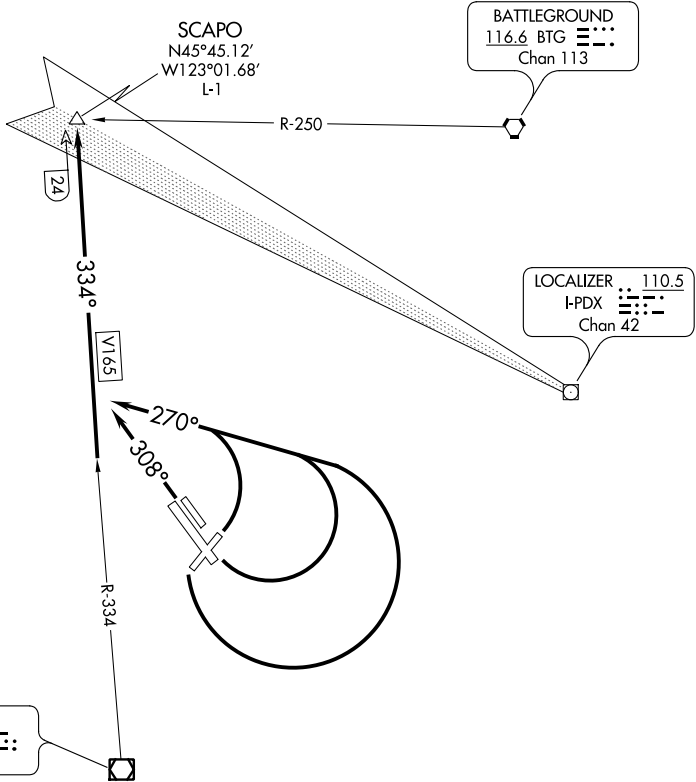


(SCAPO7.SCAPO) 18032
SCAPO SEVEN DEPARTURE

AL-5063 (FAA)
PORTLAND-HILLSBORO (HIO)
PORTLAND, OREGON

ATIS
127.65
GND CON
121.7
HILLSBORO TOWER ★
119.3 (CTAF) 239.3
PORTLAND DEP CON
126.0 269.175

TOP ALTITUDE:
ASSIGNED BY ATC



TAKEOFF MINIMUMS

Rwy 2: Standard with minimum climb of 235' per NM to 2000.
Rwys 13L/R: Standard with minimum climb of 305' per NM to 2700.
Rwy 20: Standard.
Rwys 31L/R: Standard with minimum climb of 240' per NM to 600.

NOTE: Chart not to scale.



DEPARTURE ROUTE DESCRIPTION

TAKEOFF RUNWAYS 2, 13L/R, 20: Climbing left turn heading 270°, thence
TAKEOFF RUNWAYS 31L/R: Climb heading 308°, thence
. . . . intercept UBG VOR/DME R-334 to SCAPO. Then on assigned route.
Maintain ATC assigned altitude.