

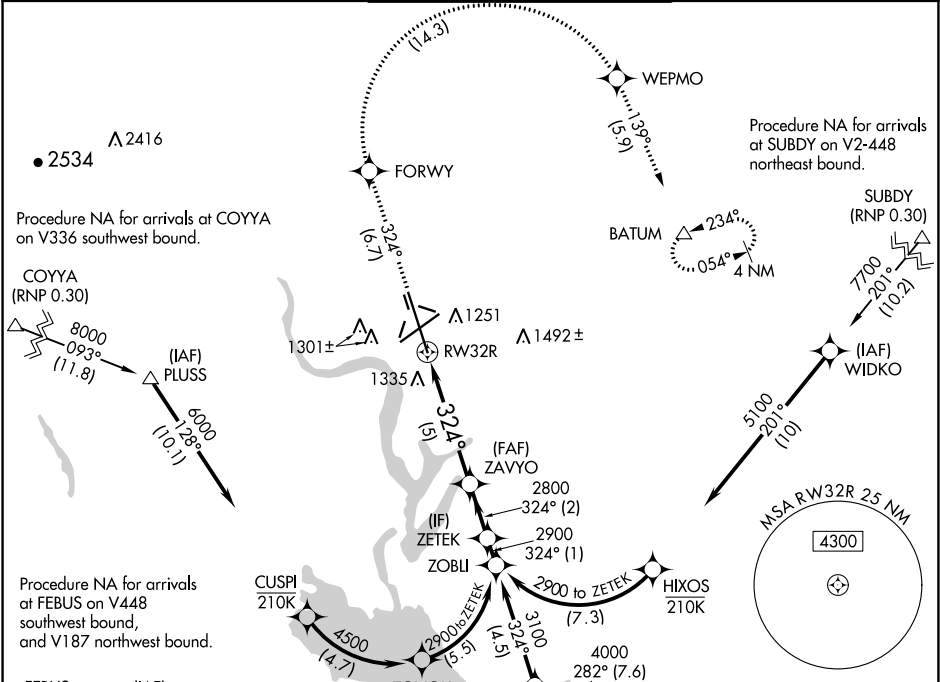
| | | |
|-------------|----------|--------------|
| APP CRS | Rwy Idg | 13492 |
| 324° | TDZE | 1167 |
| | Apt Elev | 1189 |

RNAV (RNP) Z RWY 32R

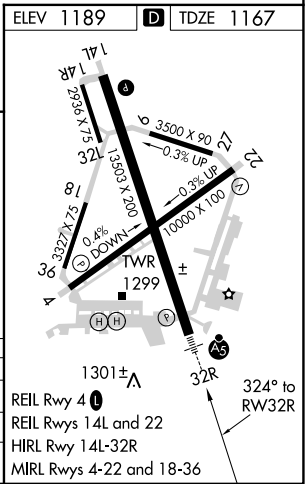
GRANT COUNTY INTL (MWH)

| | | |
|---|---------------------|---|
| <p>▼ For uncompensated Baro-VNAV systems, procedure NA below -17°C (2°F) or above 46°C (114°F). RF required. GPS required. For inoperative MALSR increase RNP 0.10 visibility all Cats to RVR 4000, increase RNP 0.30 visibility all Cats to RVR 6000.</p> | <p>MALSR</p> | <p>MISSED APPROACH: Climb to 4000 on track 324° to FORWY right turn to WEPMO and track 139° to BATUM and hold.</p> |
|---|---------------------|---|

| | | | | |
|--------------------------------------|--|--|--|--|
| <p>ATIS 119.05</p> | <p>GRANT COUNTY APP CON * 126.4 379.95</p> | <p>GRANT COUNTY TOWER * 118.25 (CTAF) 0 257.8 (EAST) 128.0 257.8 (WEST)</p> | <p>GND CON 121.9</p> | <p>UNICOM 122.95</p> |
|--------------------------------------|--|--|--|--|



| | | | | | |
|---|----------------------------|--------------|----------------|--------------|--------------------------|
| 4000 | FORWY | WEPMO | tr 139° | BATUM | Procedure Turn NA |
| VGSi and RNAV glidepath not coincident (VGSi Angle 3.00/TCH 76). | | | | | |
| | | | | | |
| CATEGORY | A | B | C | D | |
| RNP 0.10 DA | 1417/24 250 (300-½) | | | | |
| RNP 0.30 DA | 1533/40 366 (400-¾) | | | | |
| AUTHORIZATION REQUIRED | | | | | |



NW-1, 03 DEC 2020 to 31 DEC 2020

NW-1, 03 DEC 2020 to 31 DEC 2020