

APP CRS	Rwy Idg	10000
216°	TDZE	1166
	Apt Elev	1189

RNAV (RNP) Z RWY 22

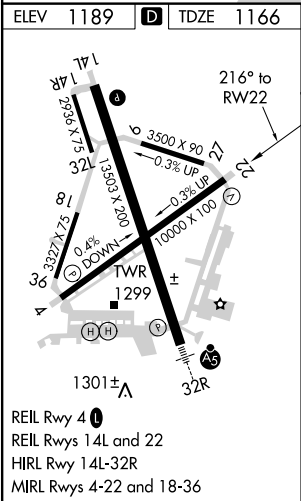
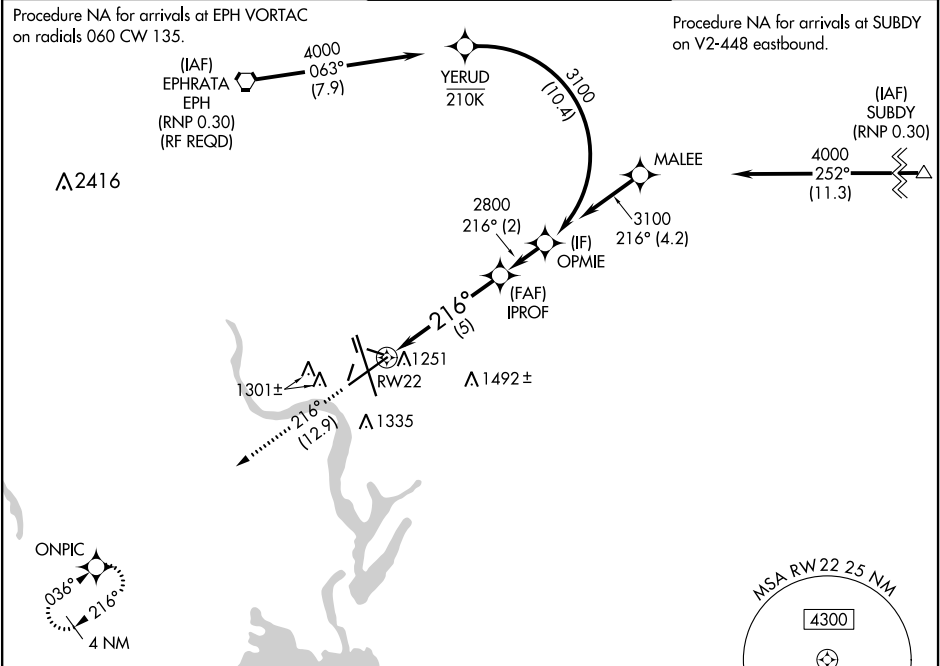
GRANT COUNTY INTL (MWH)


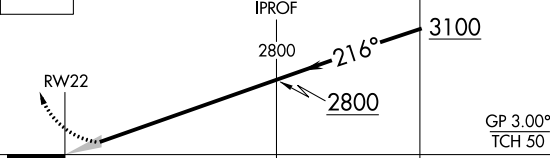
▼

For uncompensated Baro-VNAV systems, procedure NA below -17°C (2°F) or above 46°C (114°F). GPS required.

MISSED APPROACH: Climb to 4000 on track 216° to ONPIC and hold.

ATIS 119.05	GRANT COUNTY APP CON ★ 126.4 379.95	GRANT COUNTY TOWER ★ 118.25 (CTAF) 257.8 (EAST) 128.0 257.8 (WEST)	GND CON 121.9	UNICOM 122.95
----------------	--	--	------------------	------------------



4000 ↑ tr 216°	ONPIC 			
CATEGORY	A	B	C	D
RNP 0.10 DA	1416- ³ / ₄		250 (300- ³ / ₄)	
RNP 0.30 DA	1476-1		310 (300-1)	
AUTHORIZATION REQUIRED				