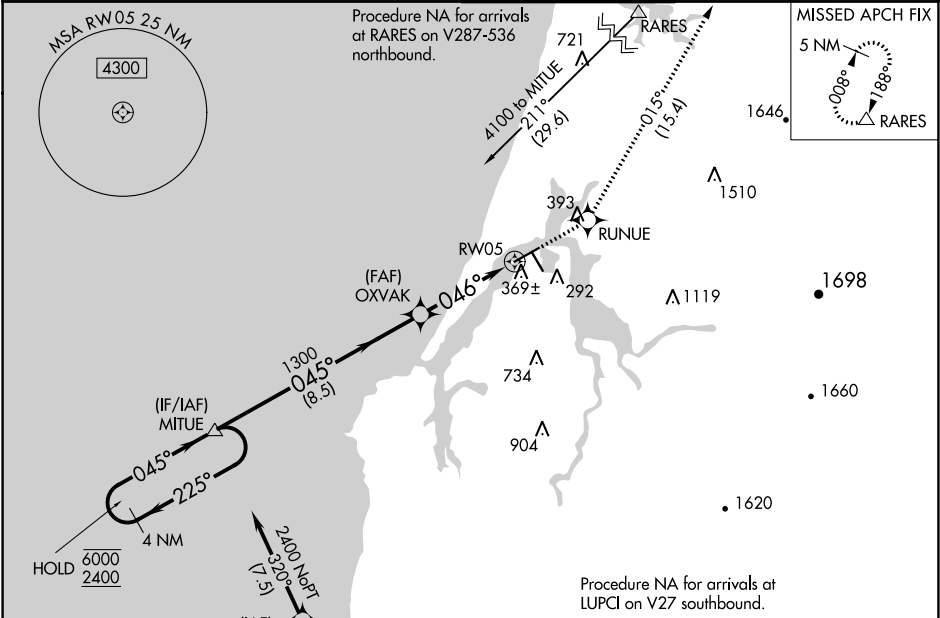


WAAS CH <b>82416</b> <b>W05A</b>	APP CRS <b>046°</b>	Rwy Idg TDZE Apt Elev	<b>5320</b> <b>16</b> <b>17</b>
--	------------------------	-----------------------------	---------------------------------------

RNAV (GPS) Y RWY 5  
SOUTHWEST OREGON RGNL (OTH)

RNP APCH. ▼ Circling Rwy 13, 31 NA at night. For uncompensated Baro-VNAV systems, LNAV/VNAV NA below -2°C or above 54°C. For inop ALS, increase LPV all Cats visibility to ½ SM, LNAV/VNAV all Cats visibility to 1½ SM, and increase LNAV Cat C/D visibility to 1¾ SM. ▲ MALSR A5	MISSED APPROACH: Climb to 6000 direct RUNUE and on track 015° to RARES and hold, continue climb-in-hold to 6000.
---	--

AWOS-3PT <b>135.075</b>	SEATTLE CENTER <b>127.55 254.35</b>	NORTH BEND TOWER* <b>118.45 (CTAF) 0</b>	GND CON <b>127.1</b>
----------------------------	--	---	-------------------------



4 NM Holding Pattern		MITUE		OXVAK		RUNUE		RARES	
6000 ← 225°		2400 → 045°		1300		↑ 6000		tr 015°	
GP 3.00°		TCH 51		1300		*1.7 NM to RW05		*LNAV only	
8.5 NM		2.2 NM		1.7 NM		RW05		RW05	
CATEGORY	A	B	C	D					
LPV DA	319-1½		303 (400-½)						
LNAV/VNAV DA	550-1¾		534 (600-1¾)						
LNAV MDA	620-½		604 (700-½)		620-1¾		604 (700-1¾)		
CIRCLING	680-1 663 (700-1)		820-1 803 (900-1)		1100-3 1083 (1100-3)		1160-3 1143 (1200-3)		

ELEV 17 D TDZE 16

HIRL Rwy 5-23  
MIRL Rwy 13-31  
REIL Rws 13, 23 and 31

NW-1, 03 DEC 2020 to 31 DEC 2020

NW-1, 03 DEC 2020 to 31 DEC 2020