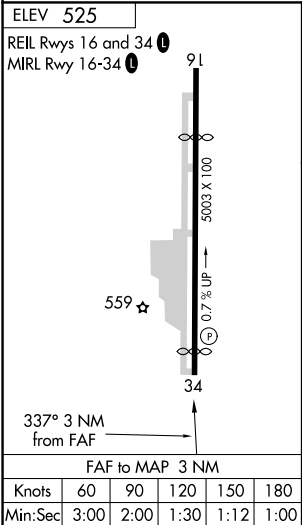
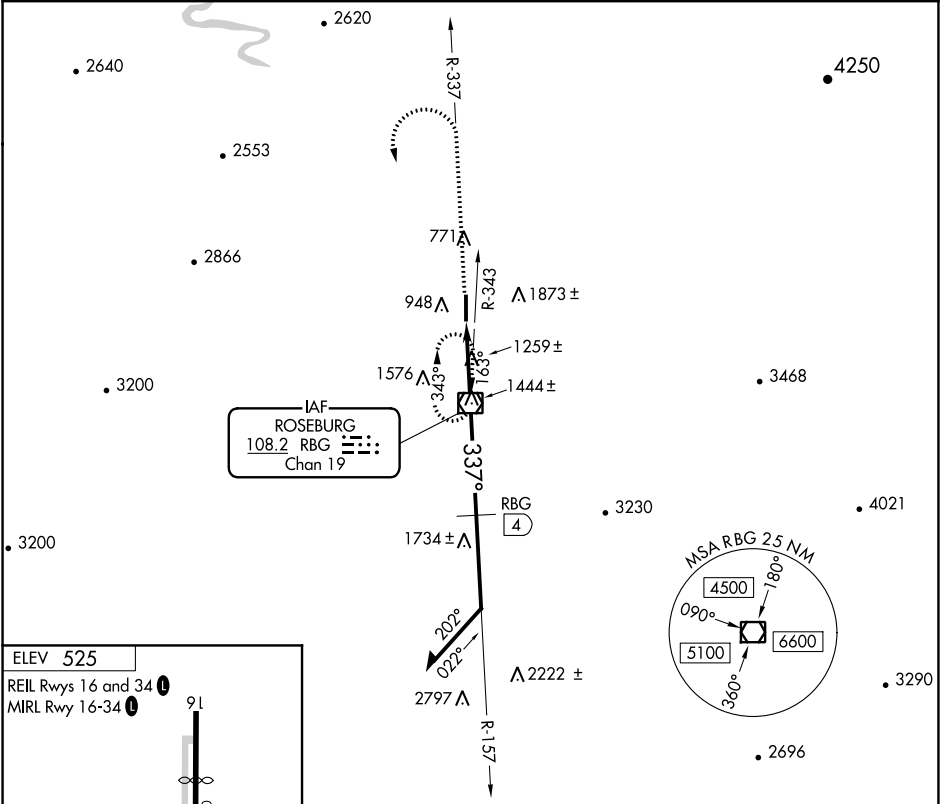


VOR/DME RBG	APP CRS	Rwy Idg	N/A
108.2	337°	TDZE	N/A
Chan 19		Apt Elev	525

VOR-A
ROSEBURG RGNL (RBG)

<div><div></div><div>NA</div></div> <div>Circling not authorized east of Rwy 16-34. Procedure NA at night. Rwy 34 helicopter visibility below 1 SM NA.</div>	MISSED APPROACH: Climb to 4000 via RBG R-337 within 1.5 NM; then climbing left turn to 5000 direct RBG VOR/DME and hold.
--	--

ASOS 135.475	SEATTLE CENTER 127.55 239.0	UNICOM 122.8 (CTAF) 0
------------------------	---------------------------------------	---------------------------------



4000	5000	RBG	RBG VOR/DME	157°	Remain within 10 NM
RBG R-337			RBG 4	337°	5000
		RBG 3		3800*	3800
				3 NM	4 NM
CATEGORY	A	B	C	D	
CIRCLING	2600-1¼ 2075 (2100-1¼)	2600-1½ 2075 (2100-1½)	2600-3 2075 (2100-3)		
CIRCLING	1740-1¼ 1215 (1300-1¼)	1740-1½ 1215 (1300-1½)	1740-3 1215 (1300-3)	1920-3 1395 (1400-3)	