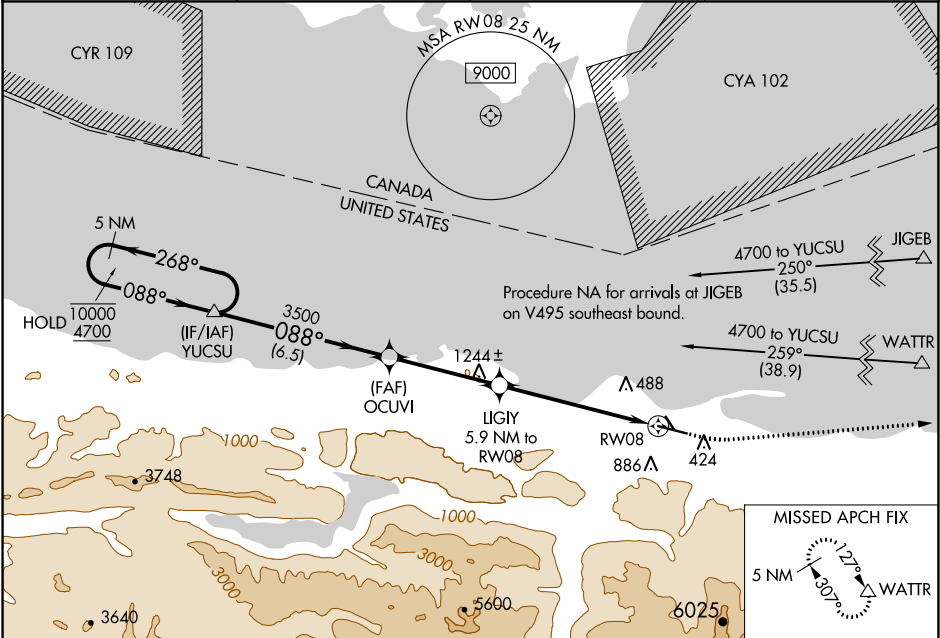


|  |                        |   |
|--|------------------------|---|
| WAAS<br>CH <b>77703</b><br><b>W08A</b> | APP CRS<br><b>088°</b> | Rwy Idg <b>6347</b><br>TDZE <b>285</b><br>Apt Elev <b>291</b> |
|--|------------------------|---|

**RNAV (GPS) RWY 8**  
WILLIAM R FAIRCHILD INTL (CLM)

|   |       |   |
|---|-------|---|
| RNP APCH.   | MALSR | MISSED APPROACH: Climb to 1000 then climbing left turn to 5400 direct WATTR and hold, continue climb-in-hold to 5400. |
| Baro-VNAV NA. For inop ALS, increase LNAV/VNAV all Cats visibility to 1 1/2 SM, and LNAV Cat C/D visibility to 1 1/2 SM. Night Landing: Rwy 13, 31 NA. Circling NA south of Rwy 8-26. |       |   |

|                        |  |                           |                                 |
|------------------------|--|---------------------------|---------------------------------|
| ASOS<br><b>135.175</b> | WHIDBEY APP CON<br><b>118.2 285.65</b> | CLNC DEL<br><b>124.15</b> | UNICOM<br><b>122.975 (CTAF)</b> |
|------------------------|--|---------------------------|---------------------------------|



|  |                     |              |                        |                         |
|--|---------------------|--------------|------------------------|-------------------------|
| ELEV 291   |                     | TDZE 285     |                        |                         |
| <div><div><div>3520</div><div>5 NM Holding Pattern</div><div>10000<br/>4700</div><div>GP 3.00°<br/>TCH 54</div></div><div><div>YUCSU</div><div>OCUVI</div><div>LIGIY<br/>5.9 NM to RW08</div><div>RW08</div></div><div><div>1000</div><div>5400</div><div>WATTR</div></div><div><div>VGSI and RNAV glidepath not coincident<br/>(VGSI Angle 3.00/TCH 50).</div><div>*LNAV only.</div></div><div><div>268°</div><div>088°</div><div>088°</div><div>3500</div><div>*2200</div></div><div><div>6.5 NM</div><div>4 NM</div><div>3.8 NM</div><div>2.1</div></div></div> |                     |              |                        |                         |
| CATEGORY   | A                   | B            | C                      | D                       |
| LPV DA   | 505-1½ 220 (300-1½) |              |                        |                         |
| LNAV/VNAV DA   | 757-1⅛ 472 (500-1⅛) |              |                        |                         |
| LNAV MDA   | 960-1½              | 675 (700-1½) | 960-1½                 | 675 (700-1½)            |
| CIRCLING   | 960-1               | 669 (700-1)  | 960-1⅞<br>669 (700-1⅞) | 1000-2¼<br>709 (800-2¼) |
| MIRL Rwy 8-26<br>REIL Rwy 26   |                     |              |                        |                         |

088° to RW08

Δ 278±

3255 X .50

1.44 X UP

6347 X 1.50

Δ 424±

355

NW-1, 03 DEC 2020 to 31 DEC 2020

NW-1, 03 DEC 2020 to 31 DEC 2020