

WAAS CH <b>40228</b> <b>W16A</b>	APP CRS <b>162°</b>	Rwy Idg TDZE Apt Elev	<b>7000</b> <b>4202</b> <b>4252</b>
--	------------------------	-----------------------------	---

RNAV (GPS) RWY 16

WORLD MUNI (WRL)

⚠

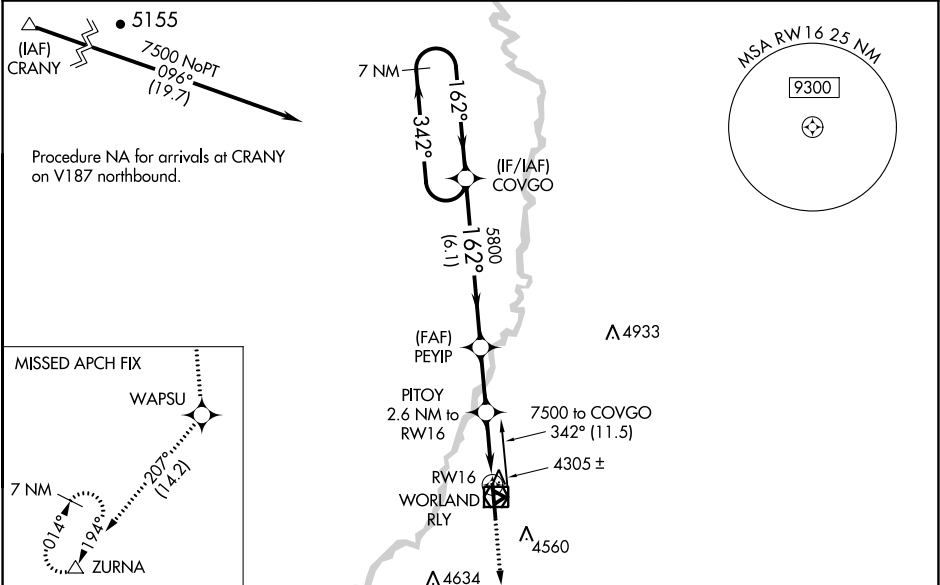
⚠

⚠

For uncompensated Baro-VNAV systems, LNAV/VNAV NA below -32°C (-25°F) or above 17°C (62°F). DME/DME RNP-0.3 NA. VDP and Baro-VNAV NA with Greybull altimeter setting. When local altimeter not received, use Greybull altimeter setting and increase all DA/MDA 140 feet, and all visibilities ½ mile. Helicopter visibility reduction below ¾ SM NA.

MISSED APPROACH: Climb to 9600 direct WAPSU and on track 207° to ZURNA and hold, continue climb-in-hold to 9600.

ASOS <b>135.475</b>	SALT LAKE CENTER <b>133.25 285.6</b>	UNICOM <b>123.05 (CTAF)</b>
------------------------	---	--------------------------------



VGSI and RNAV glidepath not coincident (VGSI Angle 3.00/TCH 41).				ELEV 4252	TDZE 4202	
<div>7 NM Holding Pattern</div> <div>GP 3.00° TCH 55</div> <div>6.1 NM2.3 NM1.5 NM1.1 NM</div>				<div>162° to RW16</div> <div>91 4223 2502 X 60 28 2241 X 60 28 7000 X 100 34</div>		
CATEGORY	A	B	C	D		
LPV DA	4452-¾		250 (200-¾)			
LNAV/ VNAV DA	4494-⅞		292 (300-⅞)			
LNAV MDA	4560-1 358 (400-1)		4560-1½ 358 (400-1½)			
CIRCLING	4880-1 628 (700-1)	4900-1 648 (700-1)	4900-1¾ 648 (700-1¾)	4900-2 648 (700-2)	REIL Rwy 16 and 34 MIRL Rwy 16-34	