


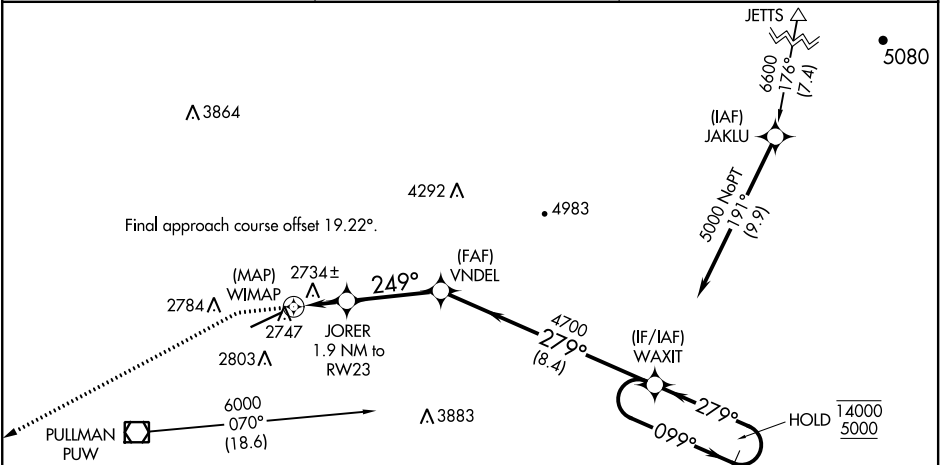
APP CRS	Rwy Idg	7100
249°	TDZE	2552
	Apt Elev	2567

RNAV (GPS) Y RWY 23

PULLMAN/MOSCOW RGNL (PUW)

RNP APCH.		MISSED APPROACH: Climb to 3500 then climbing left turn to 5000 direct WAZOO and hold.
	Procedure NA at night. Rwy 23 helicopter visibility reduction below 1 SM NA.	

ASOS 135.675	SEATTLE CENTER 123.95 290.55	UNICOM 122.8 (CTAF) 0
-----------------	---------------------------------	--------------------------



ELEV 2567		TDZE 2552
-----------	---	-----------

