

|  |                        |   |
|--|------------------------|---|
| WAAS<br>CH <b>90324</b><br><b>W34A</b> | APP CRS<br><b>342°</b> | Rwy Idg <b>5332</b><br>TDZE <b>135</b><br>Apt Elev <b>137</b> |
|--|------------------------|---|

RNAV (GPS) RWY 34

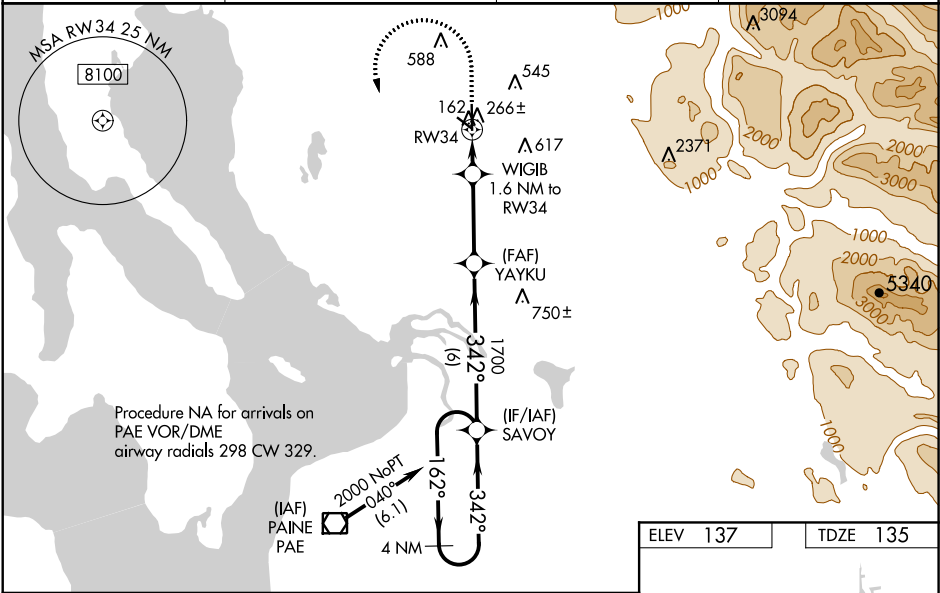
ARLINGTON MUNI (A WO)

**⚠** For uncompensated Baro-VNAV systems, LNAV/VNAV NA below -15°C (5°F) or above 43°C (109°F). DME/DME RNP-0.3 NA. When local altimeter setting not received, use Whidbey Island NAS (Ault Field) altimeter setting and increase all DA 66 feet and all MDA 80 feet and increase LNAV/VNAV all Cats, and LNAV and Circling Cats C and D visibility ¼ mile. For inoperative MALS, increase LNAV/VNAV Cat D visibility to 1 ¼ and increase LNAV Cat D visibility to 1 ⅝. For inoperative MALS when using Whidbey Island NAS (Ault Field) altimeter setting, increase LPV all Cats visibility to ¾, increase LNAV/VNAV Cat D visibility to 1 ½, and increase LNAV Cat D visibility to 1 ⅝. Baro-VNAV and VDP NA with Whidbey Island NAS (Ault Field) altimeter setting.

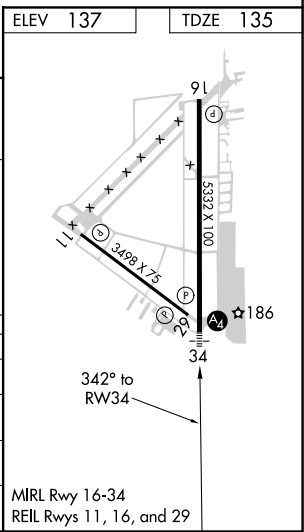
MALS

MISSED APPROACH:  
Climb to 1000 then climbing left turn to 2000 direct SAVOY and hold.

|                            |                                       |                            |                          |
|----------------------------|---------------------------------------|----------------------------|--------------------------|
| AWOS-3PT<br><b>135.625</b> | SEATTLE APP CON<br><b>128.5 306.9</b> | CLNC DEL<br><b>121.725</b> | CTAF<br><b>122.725 0</b> |
|----------------------------|---------------------------------------|----------------------------|--------------------------|



|                      |  |             |  |             |  |                       |  |
|----------------------|--|-------------|--|-------------|--|-----------------------|--|
| 4 NM Holding Pattern |  | SAVOY       |  | YAYKU       |  | RWY 34                |  |
| 2000                 |  | 162°        |  | 342°        |  | 1700                  |  |
| GP 3.00°             |  | TCH 46      |  | 6 NM        |  | 3.2 NM                |  |
| CATEGORY             |  | A           |  | B           |  | C                     |  |
| LPV DA               |  | 335-¾       |  | 200 (200-¾) |  |                       |  |
| LNAV/VNAV DA         |  | 510-1       |  | 375 (400-1) |  |                       |  |
| LNAV MDA             |  | 520-¾       |  | 385 (400-¾) |  | 520-7/8 385 (400-7/8) |  |
| CIRCLING             |  | 800-1       |  | 860-1       |  | 860-2                 |  |
|                      |  | 663 (700-1) |  | 723 (800-1) |  | 723 (800-2)           |  |
|                      |  |             |  |             |  | 920-2 1/2             |  |
|                      |  |             |  |             |  | 783 (800-2 1/2)       |  |



NW-1, 03 DEC 2020 to 31 DEC 2020

NW-1, 03 DEC 2020 to 31 DEC 2020