

ILS or LOC RWY 17
CORVALLIS MUNI (CVO)

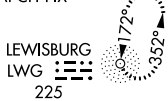
MISSED APPROACH: Climb to 900 then climbing left turn to 3000 on heading 050° and on CVO VOR/DME R-081 to SHEDD INT/EUG 22.1 DME and hold, continue climb-in-hold to 3000.

AWOS-3PT
135,775

CASCADE APP CON ★
127.5 348.7

UNICOM
123.075 (CTAF) **L**

ALTERNATE MISSED
APCH FIX



2686

2096.

IAF
LEWISBURG
225 LWG


49

1741A

00 to NDB

4097 •

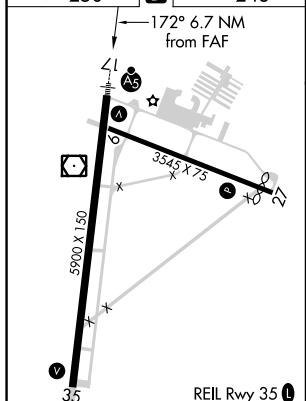
LOCALIZER 111.9
I-CVO

CORVALLIS
115.4 CVO 
Chan 101

A 1632

UG 22.1)

ELEV 250	D	TDZE 248
----------	----------	----------

MIRI Rwyys 9-27 and 17-35

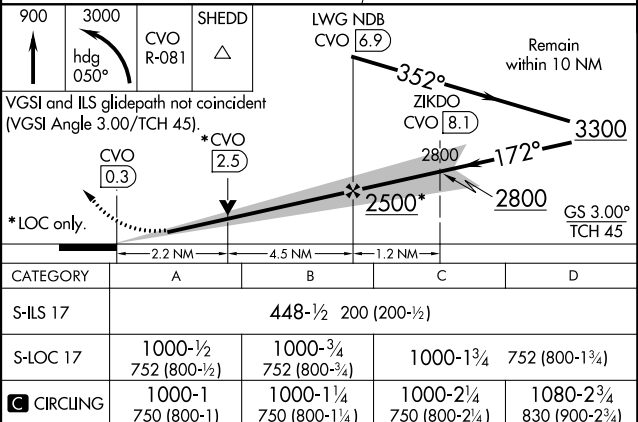
FAF to MAP 6.7 NM

Knots	60	90	120	150	180
Min:Sec	6:42	4:28	3:21	2:41	2:14

CORVALLIS, OREGON

Amdt 5 13SEP18

44°30'N-123°17'W



CORVALLIS MUNI (CVO)

ILS or LOC RWY 17