

WAAS CH 93716 W22A	APP CRS 224°	Rwy Idg 7008 TDZE 6817 Apt Elev 6817
--	------------------------	---

RNAV (GPS) RWY 22

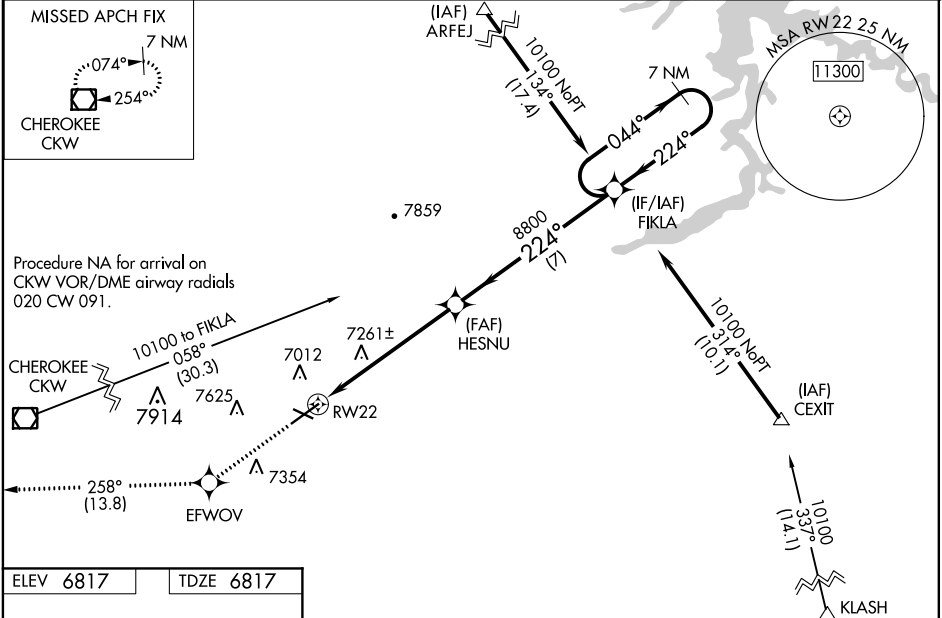
RAWLINS MUNI/HARVEY FIELD (RWL)

▼
▲

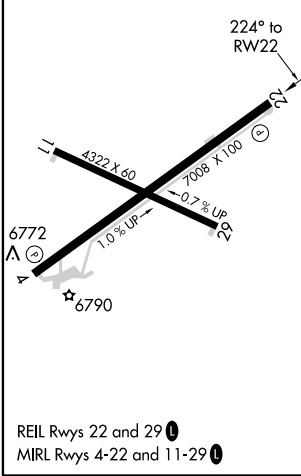
Baro-VNAV NA when using Saratoga altimeter setting. For uncompensated Baro-VNAV systems, LNAV/VNAV NA below -28°C (-18°F) or above 44°C (111°F). Circling NA northwest of Rwy 4-22. DME/DME RNP-0.3 NA. VDP NA when using Saratoga altimeter setting. When local altimeter setting not received, use Saratoga altimeter setting and increase all DA 91 feet, and LPV visibility ¾ mile, and LNAV/VNAV visibility 1 mile; increase all MDA 100 feet and LNAV visibility Cat B ¼ mile, Cats C and D ½ mile, Circling visibility Cats B and C ¼ mile. Helicopter visibility reduction below ¾ SM NA.

MISSED APPROACH:
Climb to 11700 direct
EFWVOV and on track
258° to CKW VOR/DME
and hold, continue
climb-in-hold to 11700.

ASOS 118.525	DENVER CENTER 132.1 254.35	UNICOM 123.0 (CTAF) 0
------------------------	--------------------------------------	---------------------------------



ELEV 6817	TDZE 6817
------------------	------------------



11700	EFWVOV	tr 258°	CKW	7 NM Holding Pattern
*INAV only.				
HESNU 8800				
RW22 8800				
2.1 NM to RW22				
2.1 4 NM 7 NM				
CATEGORY	A	B	C	D
LPV DA	7131-1		314 (400-1)	
LNAV/VNAV DA	7637-3		820 (900-3)	
LNAV MDA	7520-1	703 (800-1)	7520-2	703 (800-2)
CIRCLING	7520-1 703 (800-1)	7540-1 723 (800-1)	7660-2½ 843 (900-2½)	7900-3 1083 (1100-3)