

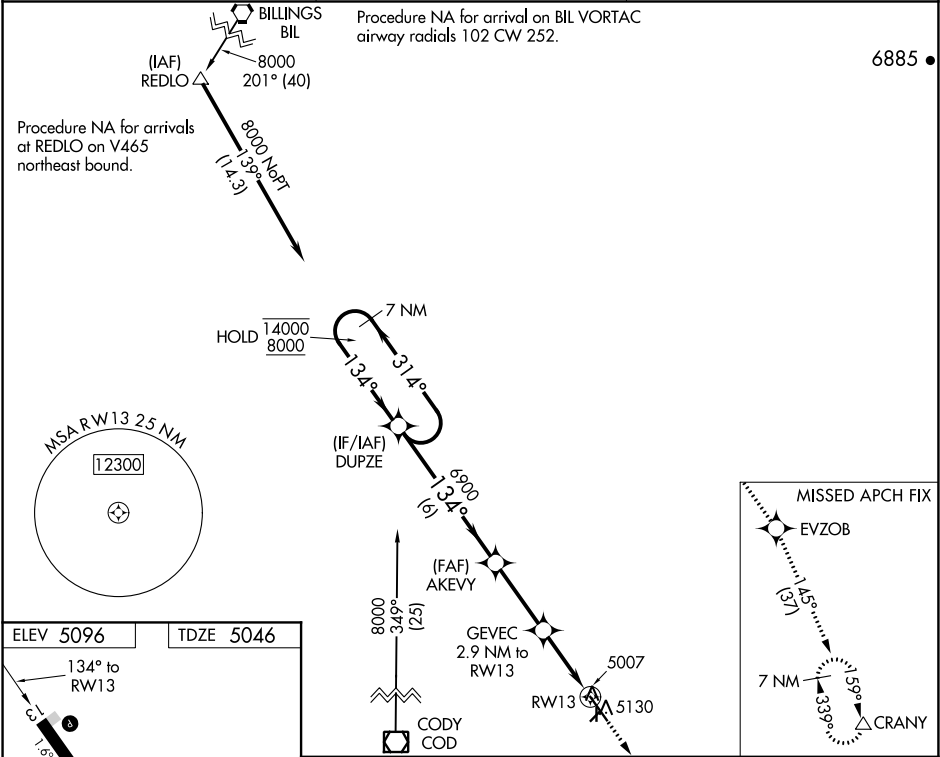
WAAS CH 90233 W13A	APP CRS 134°	Rwy Idg TDZE Apt Elev	6200 5046 5096
--	------------------------	-----------------------------	---

RNAV (GPS) RWY 13

POWELL MUNI (POY)

RNP APCH.	<p>NA Circling NA to Rws 3, 17, 21 and 35. For uncompensated Baro-VNAV systems, LNAV/VNAV NA below -25°C or above 51°C. Baro-VNAV and VDP NA when using Cody altimeter setting. When local altimeter setting not received, use Cody altimeter setting and increase all DA 54 feet and all MDA 60 feet.</p>	MISSED APPROACH: Climb to 8500 direct EVZOB and on track 145° to CRANY and hold.
-----------	---	--

AWOS-3 119.275	SALT LAKE CENTER 127.75 351.9	UNICOM 122.7 (CTAF) 0
--------------------------	---	---------------------------------



7 NM Holding Pattern		DUPZE	AKEVY		8500	EVZOB	tr 145°	CRANY
14000 ← 314°		8000 ← 134°	7 NM	6900	GEVEC 2.9 NM to RWY 13	*LNAV only		
GP 3.00° TCH 38			6 NM	3 NM	2.2 NM	0.7		
CATEGORY	A	B	C	D				
LPV DA	5296-1		250 (200-1)					
LNAV/VNAV DA	5296-1		250 (200-1)					
LNAV MDA	5300-1		254 (300-1)					
CIRCLING	5500-1 404 (500-1)	5560-1 464 (500-1)	5560-1½ 464 (500-1½)	5660-2 564 (600-2)				

NW-1, 03 DEC 2020 to 31 DEC 2020

NW-1, 03 DEC 2020 to 31 DEC 2020