

WAAS CH 45909 W25A	APP CRS 248°	Rwy Idg 4745 TDZE 3732 Apt Elev 3732
--	------------------------	---

RNAV (GPS) RWY 25

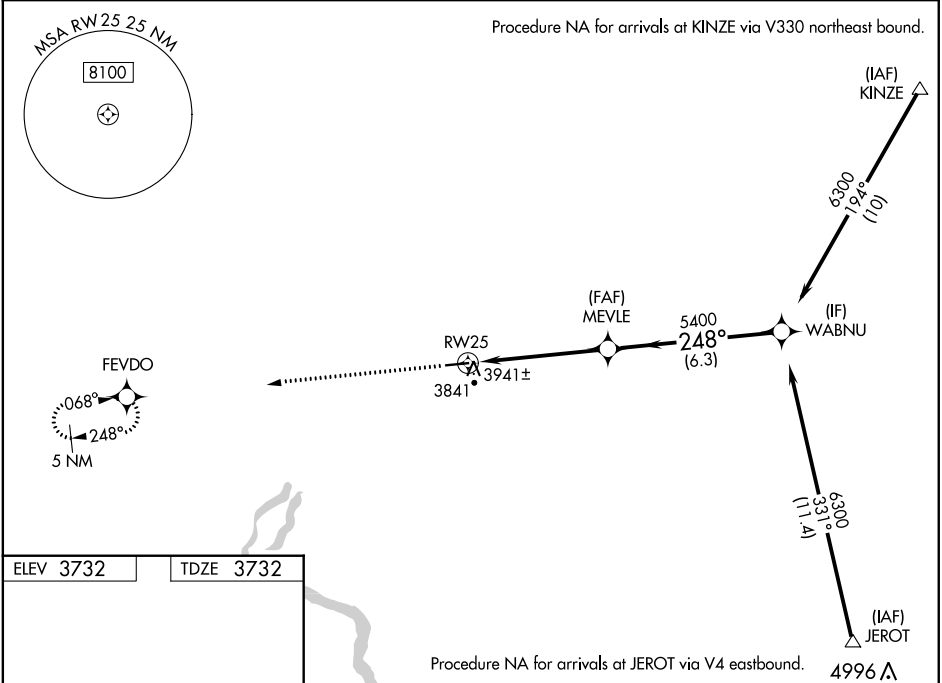
GOODING MUNI (GNG)

RNP APCH.

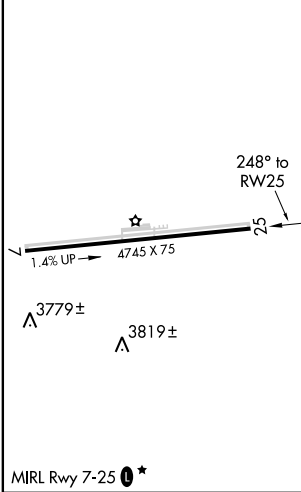
⚠ Rwy 25 helicopter visibility reduction below ¾ SM NA. Baro-VNAV NA when using Jerome County altimeter setting. For uncompensated Baro-VNAV systems, LNAV/VNAV NA below -22°C or above 41°C. Obtain local altimeter setting on CTAF; when not received, use Jerome County altimeter setting and increase all DA 86 feet and all MDA 100 feet. Increase LPV visibility ¼ mile all Cats, LNAV/VNAV visibility ¼ mile all Cats, LNAV visibility Cat C and D ¼ mile. Night landing Rwy 25 NA for Cat C and D aircraft.

MISSED APPROACH: Climb to 5900 direct FEVDO and hold.

AWOS-3PT 124.175	SALT LAKE CENTER 118.05 363.0	UNICOM 122.8 (CTAF) 0*
----------------------------	---	----------------------------------



ELEV 3732	TDZE 3732
-----------	-----------



CATEGORY	A	B	C	D
LPV DA	4006-1 274 (300-1)			
LNAV/VNAV DA	4211-1¾ 479 (500-1¾)			
LNAV MDA	4200-1 468 (500-1)		4200-1¼ 468 (500-1¼)	4200-1½ 468 (500-1½)