

APP CRS
300°

Rwy Idg
TDZE
Apt Elev

7000
1232
1249

RNAV (RNP) Z RWY 30

PANGBORN MEMORIAL (EAT)

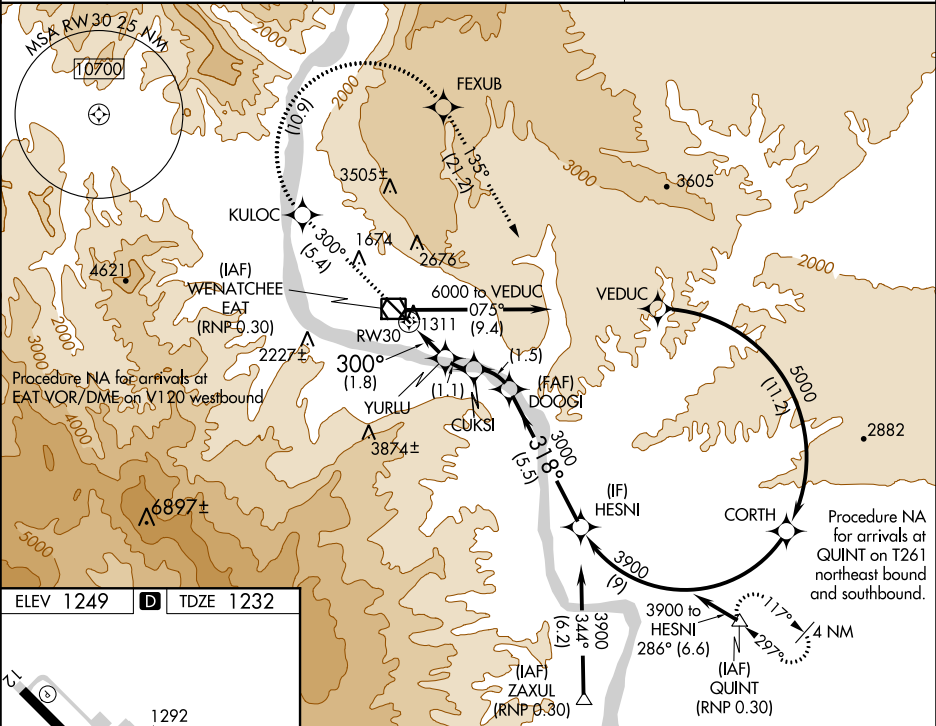
▼

☁ -7°C

For uncompensated Baro-VNAV systems, procedure NA below -10°C (14°F) or above 44°C (111°F). RF required. GPS required. FD or HUD required.

MISSED APPROACH: Climb to 6000 on track 300° to KULOC, right turn to FEXUB, and on track 135° to QUINT and hold.
* Missed approach requires minimum climb of 320 feet per NM to 5500.
Missed approach requires minimum climb of 325 feet per NM to 5500.

ASOS 119.925	SEATTLE CENTER 126.1 291.6	UNICOM 123.0 (CTAF) 0
-----------------	-------------------------------	--------------------------



ELEV 1249

D

TDZE 1232

HIRL Rwy 12-30 0

REIL Rwy 12 and 30 0

6000	KULOC	FEXUB	tr 135°	QUINT	HESNI
tr 300°					
VGSI and RNAV glidepath not coincident (VGSI Angle 4.30/TCH 46).					
RW30 300° 1.8 NM 1.1 NM 1.5 NM 5.5 NM					
CATEGORY A B C D					
RNP 0.17 DA* 1595-1 363 (400-1) NA					
RNP 0.30 DA# 1686-1 3/8 454 (500-1 3/8) NA					

AUTHORIZATION REQUIRED

PANGBORN MEMORIAL (EAT)

RNAV (RNP) Z RWY 30