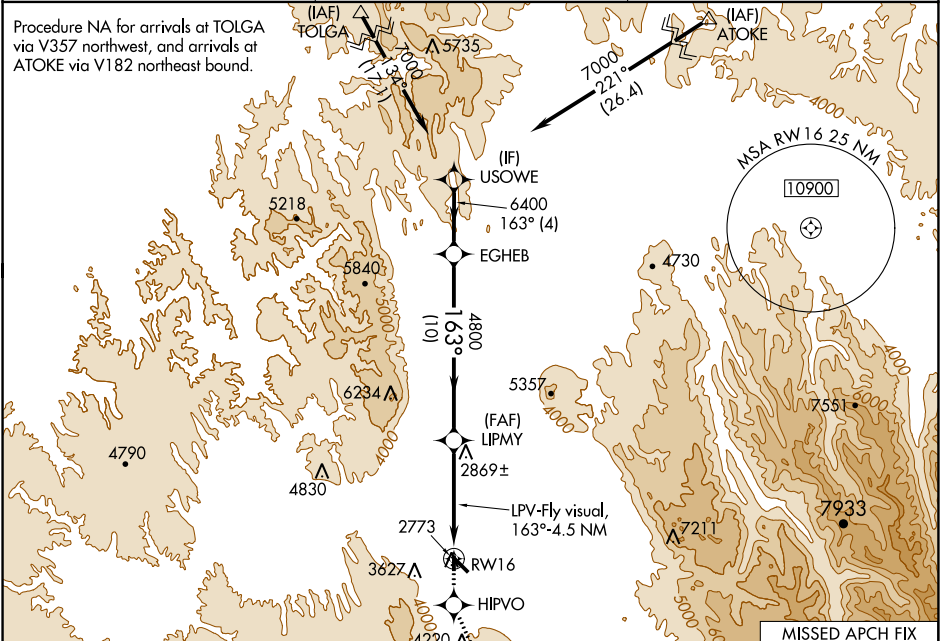


WAAS CH 66000 W16A	APP CRS 163°	Rwy Idg 3399 TDZE 2717 Apt Elev 2717
--	------------------------	---

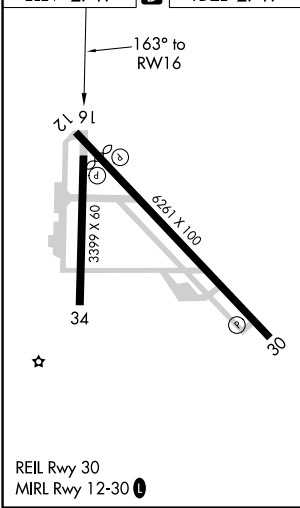
RNAV (GPS) RWY 16
LA GRANDE/UNION COUNTY (LGD)

NA -16°C	DME/DME RNP-0.3 NA. If local climeter setting not received procedure NA.	MISSED APPROACH: Climb to 9000 direct HIPVO and via 139° track to NUDEQ and hold, continue climb-in-hold to 9000.
-------------	---	---

AWOS-3PT 135.075	SEATTLE CENTER 132.6 269.35	UNICOM 122.8 (CTAF) 0
----------------------------	---------------------------------------	---------------------------------



ELEV 2717	D	TDZE 2717
-----------	----------	-----------



9000	HIPVO	139° tr	NUDEQ	VGSI and RNAV glidepath not coincident (VGSI Angle 3.00/TCH 33).
LPV, Fly visual 163° 4.5 NM RW16	* 5.3 NM to RW16	LIPMY	EGHEB	USOWE
* LNAV only	5.3 NM	1 NM	10 NM	4 NM
CATEGORY	A	B	C	D
LPV DA	4176-2	1459 (1500-2)	4176-3	1459 (1500-3)
LNAV/ VNAV DA	NA			
LNAV MDA	4440-1¼ 1723 (1800-1¼)	4440-1½ 1723 (1800-1½)	4440-3	1723 (1800-3)
CIRCLING	4440-1¼ 1723 (1800-1¼)	4440-1½ 1723 (1800-1½)	4440-3	1723 (1800-3)